

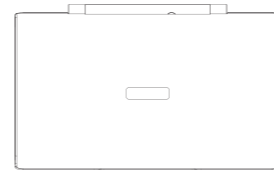
EVERUS

The compact premium experience

- Guideline for User (B-class Device) –

As this device is for home and registered for conformity of an electromagnetic wave,
it can be used in all areas as well as living areas.

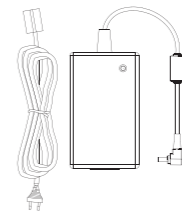
Basic components



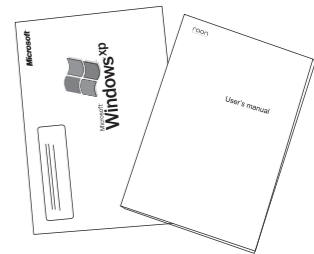
Body



Battery



AC Adapter & Cable



Windows XP CD (D60H, D24S)
UBUNTU LINUX (S16S)
& User's Manual

※ The configuration of this product can be subject to change without notice.

Safety Precautions

1. This is a mini notebook computer.
2. Condition for use of the product
Temperature for use : 10 ~ 40℃, Temperature for custody : 0 ~ 60℃
3. If it is exposed to water, it can be damaged or cause electric shock. If it is dropped in water, remove its battery from the body and consult the designated Customer Support for the matter. If it sinks in the sea water, remove its battery from the body and dry it after washing it in fresh water to reduce its corrosion.
4. Use it where it is well ventilated. If you use it in the badly ventilated condition, it can slow down, or it can be deteriorated or damaged due to heat from the product. Particularly, when you use it on the bed, make it sure that a blanket will not cover it with its power turned on.
5. When you drop it or give any shock to it, it can be fatally damaged.
Use it in a safe position. (Any damages from drop or shock are not covered by warranty services.)
6. It is a small computer, when you use it for a long time, it can cause your eyesight deterioration and headache.
So it is strongly recommended for you to take a sufficient rest. Particularly, too much bright or dark LCD can get your eye fatigue. Control the brightness of the LCD according to the illumination in your place.
7. If there are any problems with the product, remove its power/battery and consult the designated Customer Support.
8. Using it in the environment of strong magnetic field can cause malfunction or damage. Do not use near the strong magnetic field environment like a large speaker. Particularly, if any magnetic substance is close to the hard disk, it can damage the disk or delete the data stored.
9. If you leave it in the car with high temperature in the summer, it can damage the product or lead to accidents due to it.
We hold no liability for any damages or accidents from the car that was left alone.
10. A rapid change of temperature can cause the inner sides of the product and the LCD to get damp.
In this case, wait at least for one hour before turning it on. If any problem happens, plug out the power cable and remove the battery from it.
11. Use a soft cloth to clean the outer part of the body. Do not use sandpaper/abrasive or a solvent such as alcohol, which can damage the surface of the product.
12. Note in charge:
Charge in a place easy to access of consent in proper position.
On charging, in case of smell or sound for burning, remove the power plug from consent and consult the Customer Support.
13. Due to deterioration of environment, collect the used battery separately.
14. Use only the EVERUN NOTE's power adapter.
Use of other adapters may result in malfunction and risk of fire.

To increase the battery time

- Use default BIOS settings.
- Install Windows update files related to power before use. (See Page 97)
 - It enables the CPU can run in power saving.
- Install AMD processor driver. (See Page 66)
 - It controls CPU speed and hibernation automatically depending on the system loaded.
- Always execute CoxWin. (See Page 103)
 - Like AMD processor driver, CoxWin controls the speed of CPU automatically depending on the system load.
- In the Control Panel/Power Option, select [Maximum battery] for power configuration.
 - Please set it to "Maximum battery" to control the speed of CPU and power-saving mode automatically depending on the system load.

Recommendations in the use of product

1. Use the battery in the full charge.
2. Use WiFi in the power-saving mode. (See Page 90 and "Install Wifi Driver")
 - Turn off WiFi when not using it. In this case, Bluetooth turns off as well.
 - When WiFi doesn't work smoothly, change it into "Normal".
3. Install Windows update file. (See Page 97 and "Windows Update")
4. Use default BIOS settings. (Random setting can cause malfunction.)
5. Use it in the well-ventilated place with no high temperature.
6. Close the windows that are not used.

OS (Windows System) Support

- The operating system installed in this product is Windows XP Home Edition.
- If you have any problems while changing and using different OS other than Windows XP Home Edition, you cannot get it replaced or refunded, or you cannot get any technical services. If you request technical services or supports, you may be charged for them.
- To maintain optimal OS performance, receive update programs provided by Microsoft. For technical support on Windows OS, see Microsoft's website.

Storage data

- The data stored in the hard disk or SSD of this product can be damaged from S/W problems, shocks or magnetic field.
- It is recommended to back up important data. We have no liability for data losses while using the device.
- When you want to get your device repaired, please back up important data in advance. Data losses can occur during repairs, but we have no responsibility for them.

Warranty and Repairs

- This product is a precision electronic gadget. So when you disassemble, alter or destroy it, it can cause damages or fires. If you damage a warranty label at your discretion, you may not get technical services. For repairs, please contact your local the designated service center.
- You can get free warranty for a year after its purchase. For damages caused by your carelessness, it may not be covered by warranty. Also it has different warranty period for peripheral accessories including battery. See the section on warranty of the product.

※ As this wireless equipment is possible for interference of radio wave, manufacturer and installer cannot not give a service related to safety of life.

Contents

1 Product at a glance	
1-1 Name of each part	
Top	13
Function of Fn keys	14
Front	15
Back	15
Bottom	16
Left	17
Right	17
1-2 Start and Finish	
How to start	18
How to finish	18
2 Battery	
2-1 Removing/mounting battery	20
2-2 Charging battery	20
2-3 Checking battery level	21
2-4 Cautions for use of battery	21
3 Use of Product	
3-1 How to use	
Connect Earphone / Microphone	23
Connect USB	23
Use external (dual) monitor	24
Video converting program	30
Play high-res video (KMP setting)	34
Select power control mode	38
Rotate display	39
3-2 System control program (CoxWin)	
Control Program(CoxWin)	42
CPU Speed Control	43
Touch Screen Calibration setting	44
Camera Utility	45
4 Use of Network	
4-1 How to use WiFi	48
4-2 How to use Bluetooth	51
5 Use of Basic Functions of Windows XP	
5-1 Setting wallpaper	56
5-2 Setting mouse	56
6 Restoration of Windows XP	
6-1 Windows XP restoration	58
6-2 System rescue	60
6-3 Windows reinstallation and MS certification	62
7 Installation of drivers	
1. AMD Processor Driver	66
2. AMD Dual Core Optimizer	69
3. Microsoft .NET Framework	72
4. Chipset driver and utility	74
5. Audio driver	79
6. SDA Standard Compliant SD Host Controller driver update	80
7. WiFi driver	86
8. BlueSoleil, a Bluetooth utility	93
9. Update for Windows XP	97
10. Installation or update of CoxWin	103
8 Q&A	105
9 Specification	110
10 FCC information	111
11 Warranty and Repairs	113

1.Product at a glance

1-1 Name of each part

- Top
- Function of Fn Keys
- Front
- Back
- Bottom
- Left
- Right

1-2 Start and Finish

- How to start
- How to finish

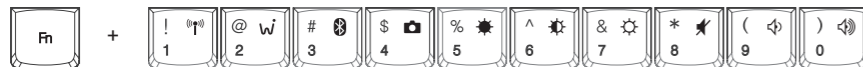
1-1 Name of each part



- ① Left speaker
- ② Power button
- ③ Function key: (See how to use Fn keys)
- ④ Left button of mouse
- ⑤ Optical mouse: It operates in the same way as the general mouse does. Put your finger on the optical receiver of the mouse before moving it. You can press its left button once or twice.
- ⑥ Right button of mouse
- ⑦ Microphone: A mono-type condenser of microphone
- ⑧ LAN LED(Orange): It displays the connectivity of LAN. It flashes in the power saving mode.
- ⑨ WWAN(Green): It displays WWAN.(Wibro, WiMax, HSDPA)
- ⑩ Power(Red) / HDD(Green) LED: It displays the status of power and hard disk.
- ⑪ PS button: Press the button, and the system starts the power saving mode.
- ⑫ AUTO button: It controls the CPU speed depending on power condition (whether connecting adapter power or not).
- ⑬ Right speaker
- ⑭ Camera: 1.3 million pixels

Use of Fn Keys

Blue function keys on the keyboard are used in combination with Fn keys. Main function keys are explained in the images below. It is possible to control the unit in CoxWin.(except for sound)



: It turns WiFi on and off.

: It turns WWAN on and off.(WiMax, Wibro, HSDPA if installed)

: It turns Bluetooth on and off.

: It turns Web-camera on and off.

: It turns LCD off.

: It turns LCD brightness dark.

: It turns LCD brightness light.

: It turns speaker off.

: It turns the sound of speaker low.

: It turns the sound of speaker high.

Fn + Q : Setting resolution

Fn + E : Running Explorer

Fn + R : Running/Finishing CoxBat

Fn + T : Running/Finishing CoxTimer

Fn + I : Running Internet Explorer

Fn + S : Showing/Hiding CoxWin

Fn + P : Capturing the screen that is displayed
at the moment

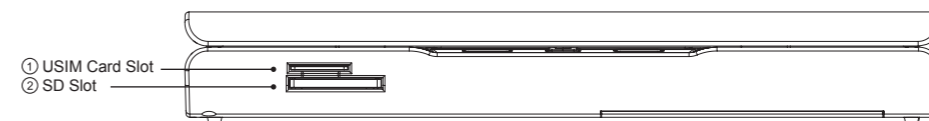
Fn + Optical mouse : Scroll display (See Page 13-④)

Fn + Left button of mouse : Mouse center click

Fn + Screen touch : Mouse right click

Fn + Esc : Standby Mode

Front

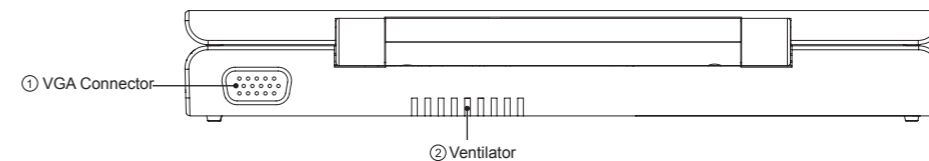


- ① USIM Card Slot
- ② SD Slot

① USIM Card Slot : It is used for USIM card necessary for WWAN such as WiBro, WiMax or HSDPA.

② SD Slot : Insert SD card to transfer or store data. (Also, supporting mini SD / SDHC)

Back



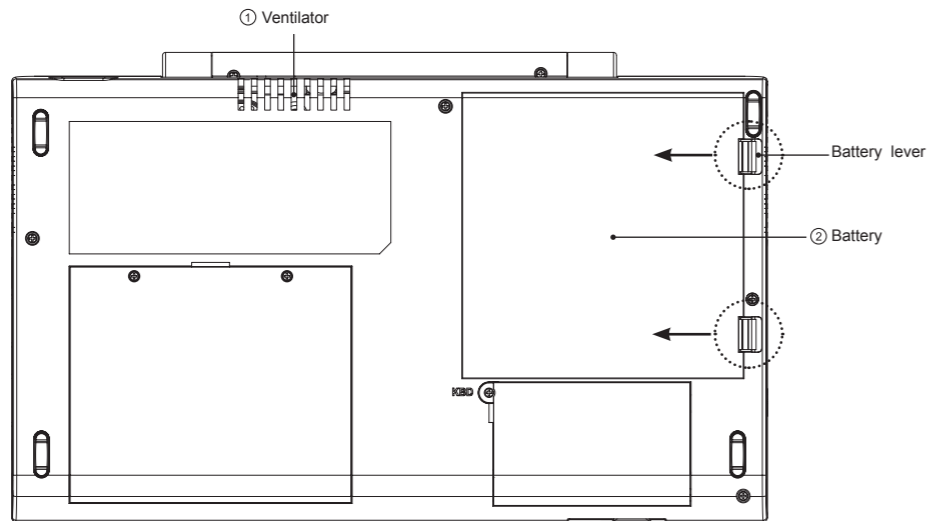
- ① VGA Connector

- ② Ventilator

① VGA Connector : It connects an external display device with a 15-Pin D-Sub connector.

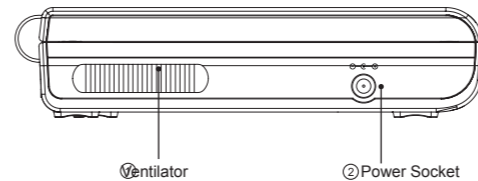
② Ventilator : It emits heat from the system and CPU, so please be careful not to block it.

Bottom



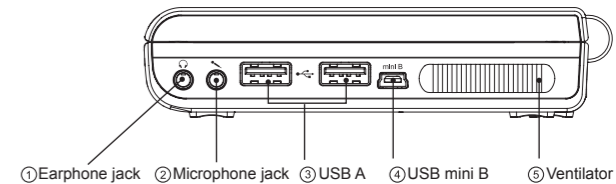
- ① Ventilator : Do not block it when in use. It can cause severe impact on its performance and life.
 ② Battery : To remove it, push two locking levers to the direction of the arrows to lift.

Left Side



- ① Ventilator : Do not block it when in use. It can cause severe impact on its performance and life.
 ② Power Socket : It connects the power adapter included in the product.
 (Please use a genuine adapter. When you use non-genuine adapter, it can cause malfunctions or damages.)

Right Side



- ① Stereo earphone jack
 ② Mono microphone jack
 ③ USB A port (2EA)
 ④ USB B mini port : It is used for using the product as an external disk by connecting it to the other PC.
 (When connecting it, the product should be shut down, not Stand-by or Hibernation.)
 ⑤ Ventilator : It emits heat from the system and CPU.
 (Do not block it when in use.)

1-2 Start and Finish

How to start

Insert the battery into the product and press POWER button. Its system starts to operate.
The booting time may differ depending on S/W programs and applications installed by users.

How to finish

To finish Windows system, select one from Standby Mode, Finish, Hibernation Mode, and Start Again.

- Standby Mode : Maintain the present Windows settings. If necessary, press Power button as a mode to use the system instantly. The system will start in seconds. It is useful to turn the device ON/OFF frequently.
- Finish : If you select it, it will completely finish it.
- Hibernation : It saves the environment for use before finishing. If you boot it again, it is the same with the last working environment. Press shift key to call Hibernation mode at System End.
- Start Again : It starts Windows again after finishing it. It is used when you install programs or find some problems in Windows operation.

2. Battery


2-1 Removing / mounting battery

2-2 Charging battery


2-3 Checking battery level

2-4 Cautions for use of battery



Battery


- Battery is provided when you purchase the product.
-  - It is Lithium Polymer Battery which has its safety device on over current and temperature attached.
- Be careful not to disassemble it at your discretion or apply shocks to it, which can cause explosions and fires.
- For damages from discretionary manipulation or drop, you cannot get its repair services.
- If it is dropped into water, do not use it, go to the technical service center and have it checked.
- If its surface expands or it leaks, do not use it and go to the technical service center for checking it.

2-1 Removing/mounting battery

-  - Put battery terminal tightly to the back terminal to push in until it sounds “Snap.”
- Check it if it does completely snap into the body.
- To remove it, follow the opposite order. Push the locking pin upward to lift.
- Battery in use or being charged can be hot. So be careful when you use it.

2-2 Charging battery

-  - **Use only the EVERUN NOTE's power adapter.**
Use of other adapters may result in malfunction and risk of fire
- To charge it fully, discharge it completely at the first time before charging.
- Its temperature can increase while you charge it.
-  - **Be careful not to block the product with a blanket or clothes while you charge it.**
- You can check its charging status at the Windows Task bar and the power control from the control panel.
- For low-power warning setting, you can set it at the power control from the control panel.

-  - **If the temperature of the product is high, its charging time can be delayed due to the operation of the temperature sensor inside the battery.**

2-3 Checking battery level

If you move the cursor to the icon of power control at Windows Task bar, it will show the battery level with percentage (%). The battery time is measured by Windows system and can be different from the actual remaining time.

2-4 Cautions for use of battery

1. Do not leave it under sunshine or in the surroundings with temperature over 60°C like in the car parked in summer. It can cause the product or the battery to overheat.
2. Charge the battery at temperature of 10°C to 30°C. Charging it over this temperature can cause it to overheat. And charging it at low temperature can lengthen the charging time.
3. For safety of a user, use the designated AC adapter and genuine battery provided with the product. This product is designed to operate only with the genuine battery.
4. The temperature of the battery goes up when it is in use or being charged. Do not worry about it as it is normal.
5. Do not leave it close to every heat source (radiator, heater, etc.) as it can cause explosions or fires.
6. Be careful not to have it exposed to humidity and water.
7. Do not disassemble it.
8. Do not apply any mechanical shock to it.
9. Remove it from the product to prevent it from being damaged when you don't use it for a long time.
10. If its time for use is still not enough even after its full charge, its life becomes almost exhausted. So you need to replace it with a new one.
11. You do not need to discharge it to charge.
12. Charge it fully before use when you don't use it for a long time.

3. Use of Product

3-1 How to use

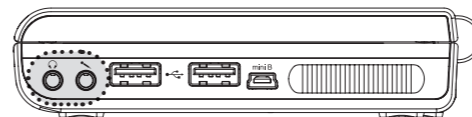
- Connect Earphone / Microphone
- Connect USB
- Use external(dual) vvv vmonitor
- Video converting program
- Play high-res video(KMP setting)
- Select power control mode
- Rotate display

3-2 System control program(CoxWin)

- Control Program(CoxWin)
- CPU Speed Control
- Touch Screen Calibration setting
- Camera Utility

3-1 How to use

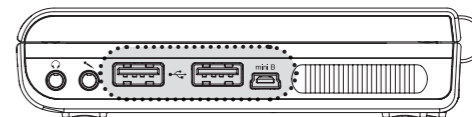
Connect earphone/microphone



- Connect the earphone / microphone to the appropriate terminals.

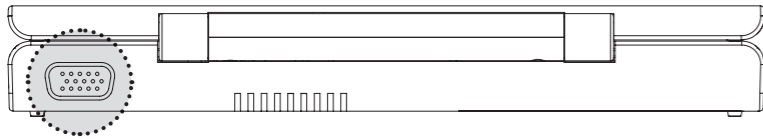
※ When using the earphone at high notes for a long time, it can cause headaches or hearing disorders.

Connect USB



- It consists of two USB A ports and one USB miniB port.
- To use it as an external disk, connect USB miniB port with USB port of the other computer, by use of USB cable (optional sale). To be recognized as an external disk, the product should be shut down, not Standby mode or Hibernation mode.
- Connect USB devices (keyboard, mouse, external disk) to USB A port. A dedicated driver is required, depending on the devices.
- Install the driver provided with the device.
- When power is insufficient, USB may not be connected.
- For a device that cannot read a USB device
 1. Check if it works well on the other computer.
 2. Replace its USB cable.
 3. Change different USB port from the other computer.
 4. Check whether that USB device has its own power supply or not. If not, find other device with its own power supply.

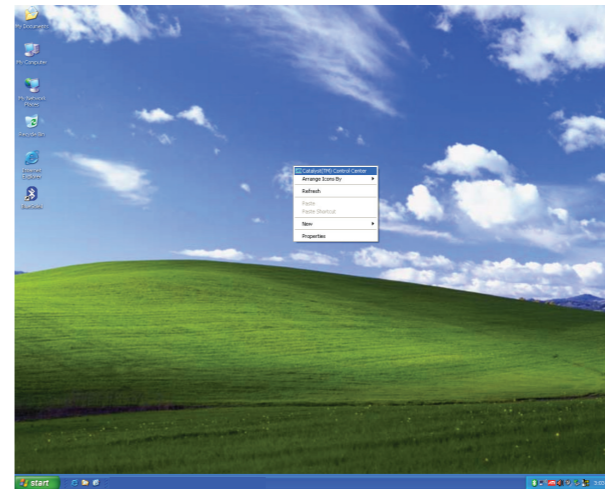
Connect external monitor



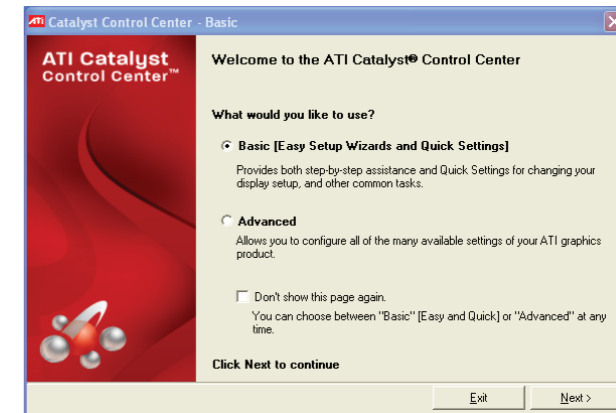
Connect a monitor cable to the VGA connector at the back of the product.
You can display images simultaneously by connecting it to digital TV, projector, PC monitor etc, which have the VGA connector.

- ※ There are two external modes, a [Clone] mode that LCD screen of this product and the contents of the external monitor are the same and an [extension] mode that the external monitor is available, independent of images of LCD screen. (See the explanation below)

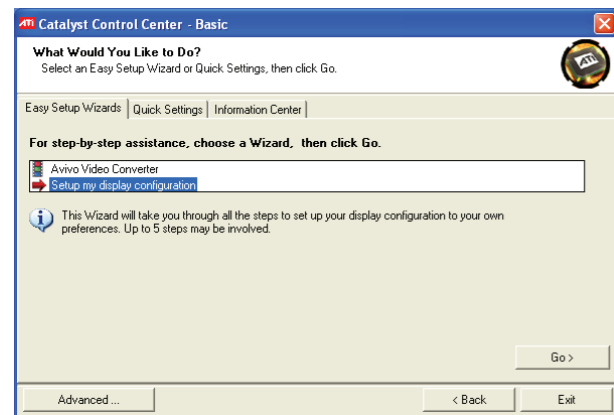
Click the right button of the mouse at the wallpaper to select Catalyst (TM) Control Center.



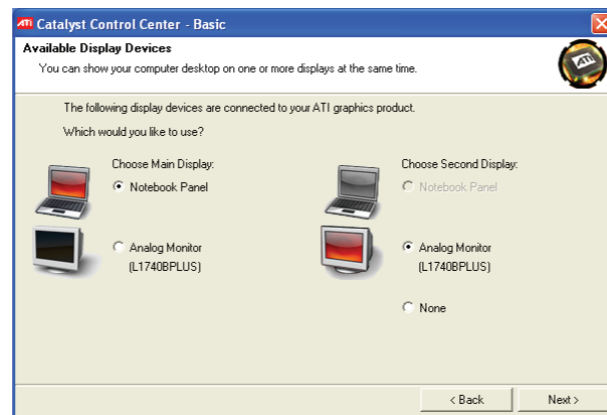
It displays ATI Catalyst Control Center screen. Select [Easy Setting Wizard and Quick Setting] and click [Next].



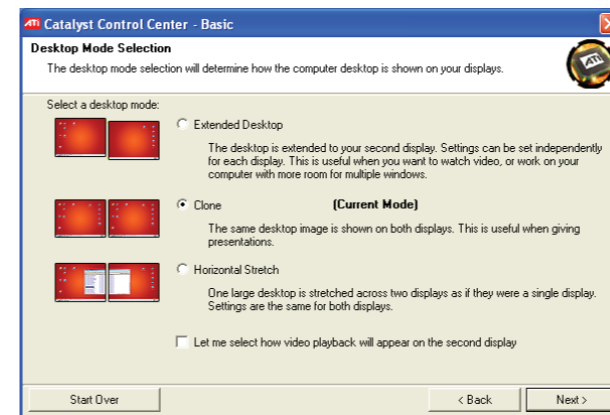
Select [My Display Configuration Setting] and click [Go] button.



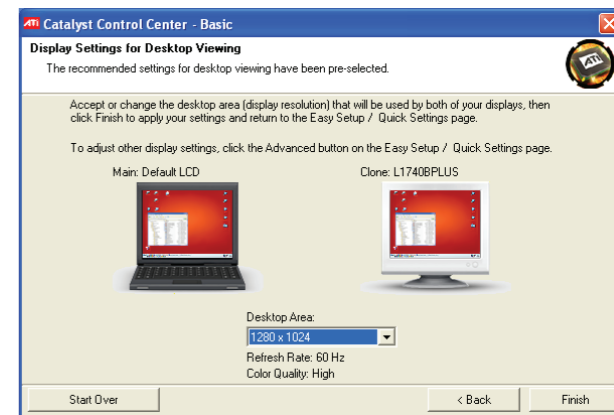
It displays with the products, which is connected now, checked and click [Next].



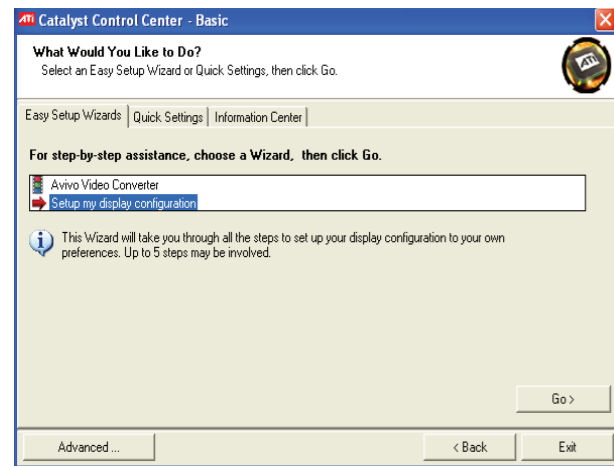
Select how to connect at the screen of [Select Wallpaper Mode] and click [Next]. Select [Clone] Mode to display the same as the screen of the product.



Now the main body is connected to the external monitor. Select the resolution you want and click [Next].

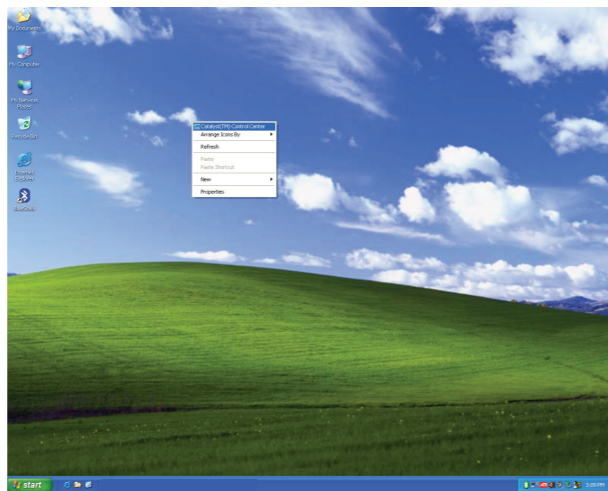


It returns the first screen. Click [End] to finish the setting.

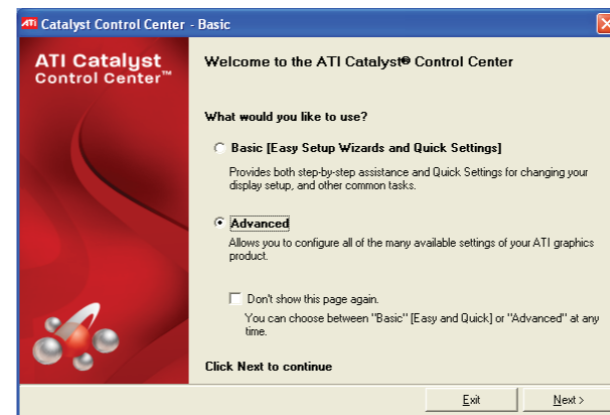


Select Advanced User Mode

Click the right button of the mouse at the wallpaper to select Catalyst (TM) Control Center.



It starts the screen of ATI Catalyst Control Center. Select [Advanced] and click [Next].



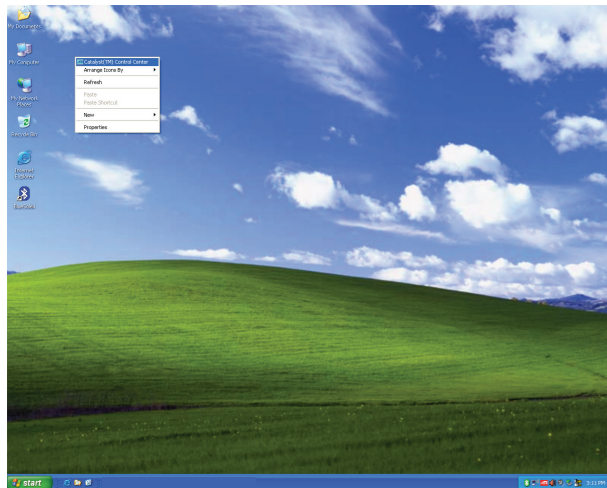
This is [Advanced User Mode]. You can set advanced setting for each item. After selecting the item, see [Help].



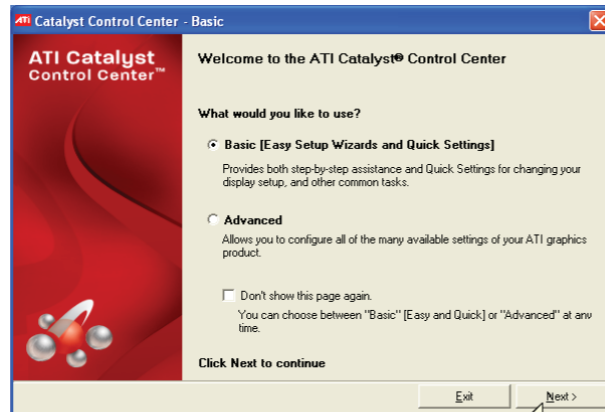
Convert Video File

It converts CD/VCD, Sony PSP, iPod format etc at high speed.

Click the right button of the mouse at the wallpaper to select Catalyst (TM) Control Center.

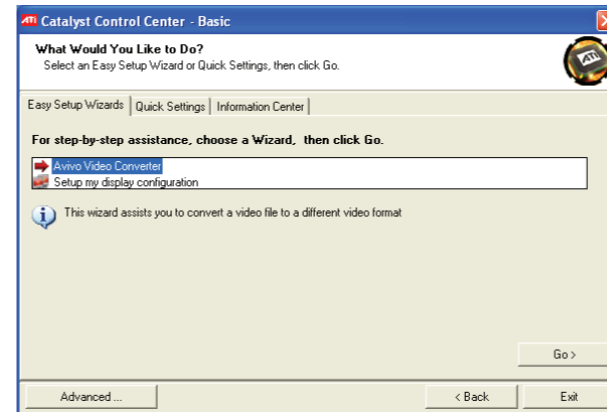


It starts the screen of ATI Catalyst Control Center. Select [Easy Setting Wizard and Quick Setting] and click [Next].

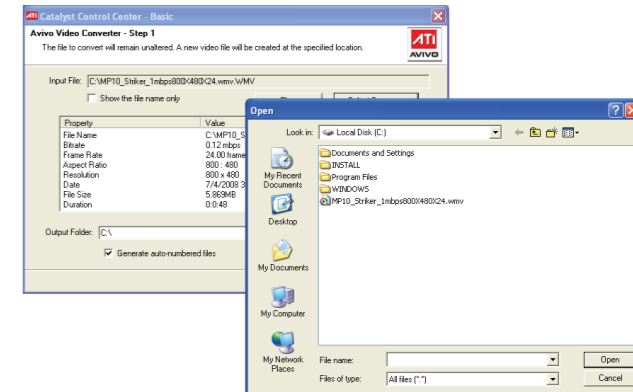


Advances to the next page of the Wizard (the settings you have made up to this point may be automatically applied, if required).

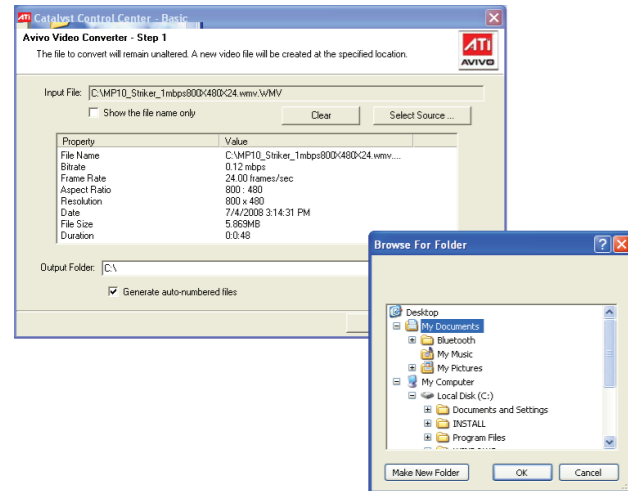
Select AVIVO Video Converter and click [Go] button.



Click [Select Source], and screen of [File Manager] pops up. Select [Source Vide].



Select a folder to save and click [Next].



Select a video format to convert, select video quality using the scroll and click [Next].

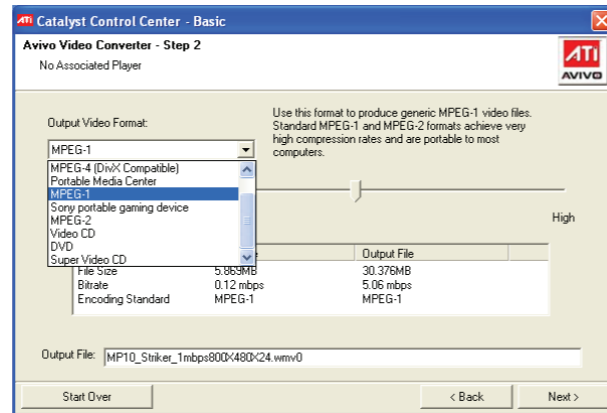
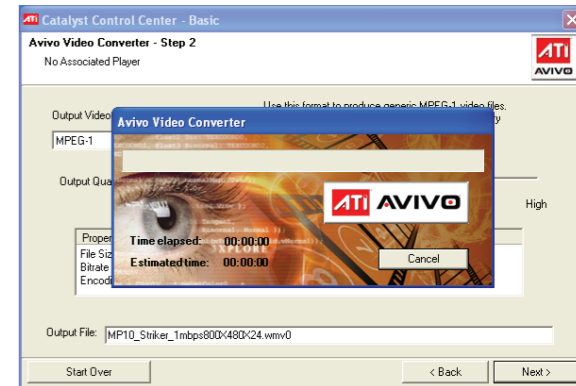


Table 1. ATI Avivo Video Converter Formats

To Create	Use this Format
Generic MPEG-1 video files. Standard MPEG-1 and MPEG-2 formats achieve very high compression rates and are portable to most computers.	MPEG-1
Generic MPEG-2 video files. Standard MPEG-1 and MPEG-2 formats achieve very high compression rates and are portable to most computers.	MPEG-2
Generic MPEG-4 video files. Standard MPEG-4 provides good quality at low bit rates; very high compression is possible.	MPEG-4 (DivX Compatible)
Generic Windows® Media Video files. Windows Media format is best for streaming video.	Windows Media Video
Video for creating video CDs.	Video CD
Video for creating a super video CD.	Super Video CD
Video for DVD authoring.	DVD
Video for viewing on a Portable Media Center device.	Portable Media Center*
Video for viewing on a Sony® portable gaming device.	Sony portable gaming device*
Video for viewing on an iPod® Video.	iPod Video*

※ For details on uploading files to a portable device see the device manufacturer's user's guide or Help.

Video is being converted. If it is finished, this program will be done.

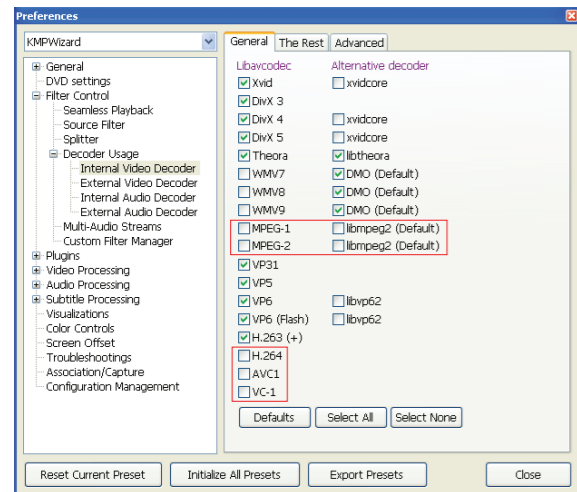


Setting KMPlayer to play high-res video

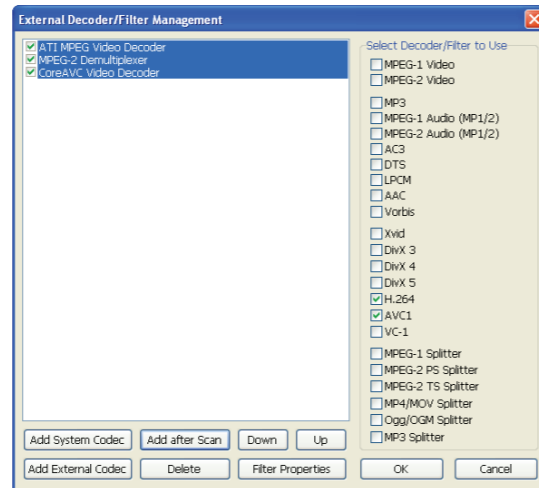
※ It is recommended to use KMPlayer to play high-resolution HD video such as 1080p.

KMPlayer guides the way to reduce CPU load using HW resource built in the product.

Go to Preference Menu (F2 Key) and uncheck the following items from Internal Video Codec. (It means that it uses an external video codec).

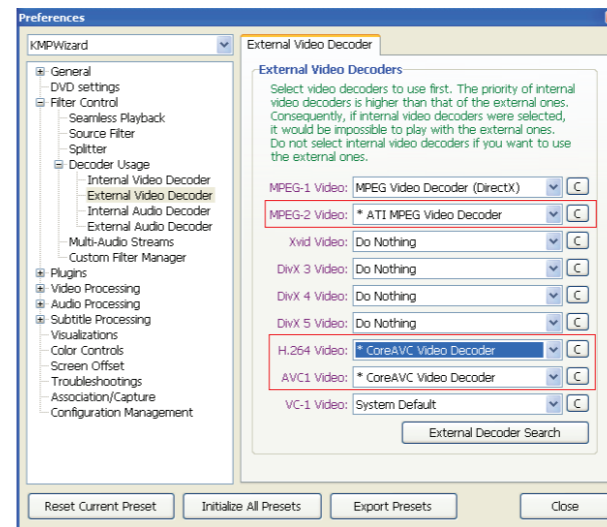


Run [Add by Search] from External Video Codec. Define External Codec User to check [ATI MPEG Video Decoder] as shown below. If this item doesn't appear, you have to run /INSTALL/ChipSet/M690../XP32../AVIVO/Setup.exe.

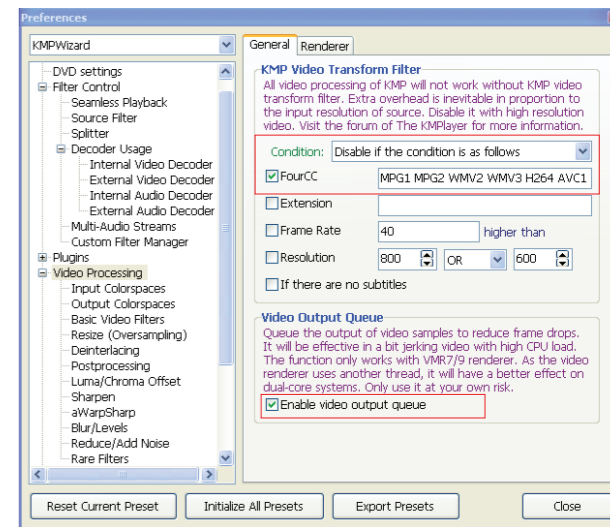


The example above shows CoreAVC Codec installed to play H.264(X264), AVC Video. It is recommended to use CoreAVC to play it smoothly.

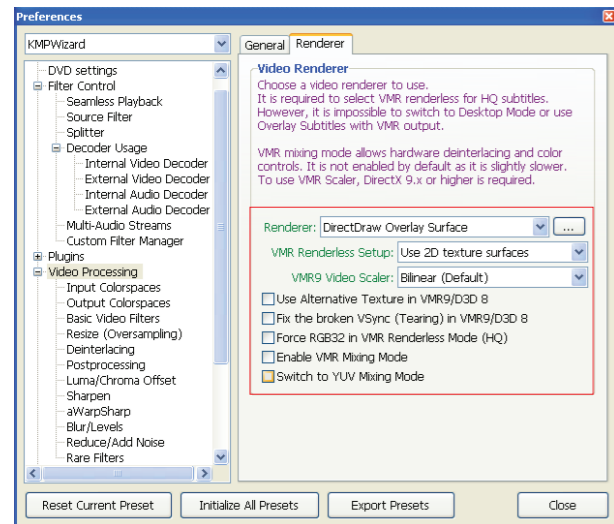
Return to External Video Codec to set the items below.



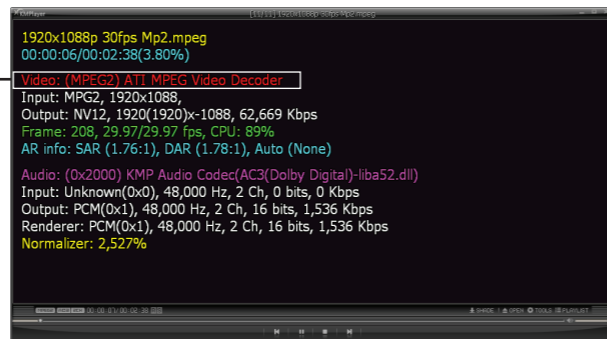
Set Video Processing/Video Display Terminal as shown below.



Set Video Processing/Video Display Terminal as shown below.

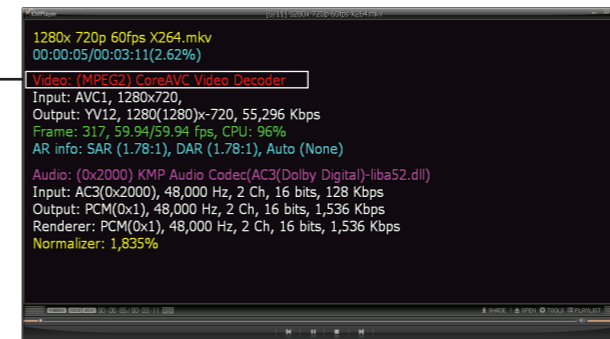


Check Playback Information (press TAB key) to make it sure that it is set properly. When playing MPEG(.mpg) video, a playback information displays as follows:



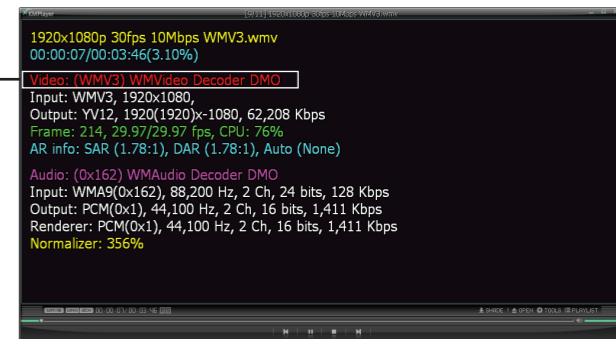
Video : (MPEG2) ATI MPEG Video Decoder

Check Playback Information (press TAB key) to make it sure that it is set properly. When CoreAVC Codec is installed and H.264 (.mkv) video plays, a playback information displays as follows:



Video : (MPEG2) CoreAVC Video Decoder

Check Playback Information (press TAB key) to make it sure that it is set properly. When WMV (avi) video plays, a playback information displays as follows:



Video : (WMV3) WMVideo Decoder DMO

Select Power Control Mode



- PS (Power Saving Mode) : It reduces power when working on with the task low loaded. CPU speed is set low and it reduces battery consumption. It is often used in internet surfing, documents and music playback.
- Auto Mode : It is a mode in which the operating speed controls automatically. If you convert it into this mode when a movie stops playing or the movie and its sound don't correspond, you can play it smoothly. As it causes the battery to consume increasingly and reduce its life, however, you have to use it only when it is needed.

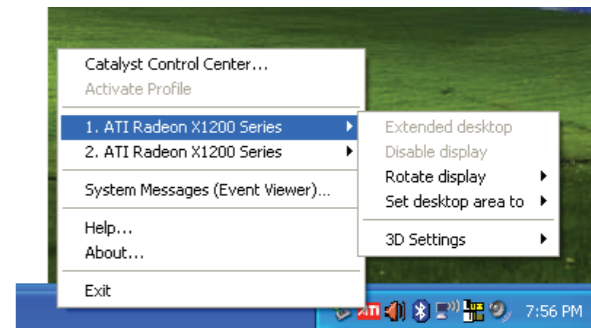
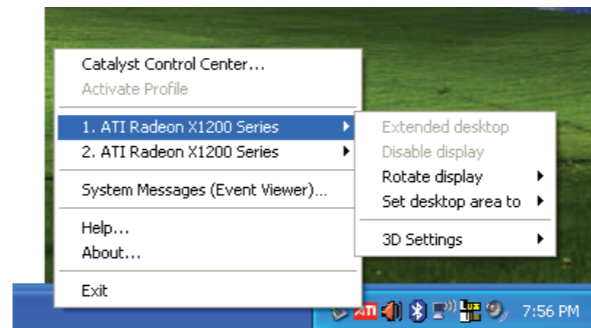
Rotate Display

When CCC (Catalyst Control Center) is installed in the product, it supports four kinds of Display Rotate Mode as follows:

- Standard horizontal (0°)
- Right (90° in the clockwise direction)
- Reverse horizontal (180°)
- Left (90° in the counterclockwise direction)

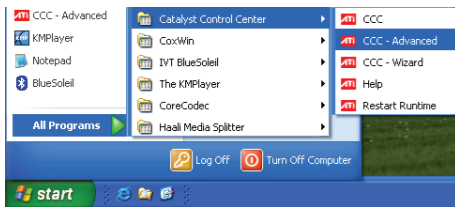
How to change [Rotate Display]

When you change [Rotate Display], click CCC shortcut icon at the wallpaper to change it, or set/change it with Hot Key. Click the right button of CCC shortcut icon > 1. ATI Radeon X1200 Series > Rotate Display > Select [Rotate Display]

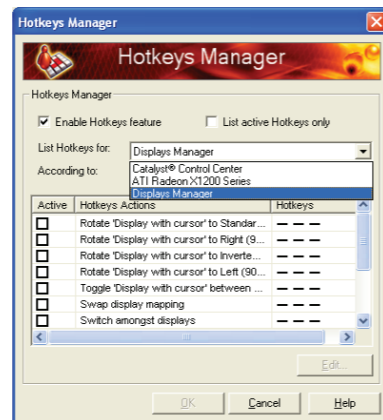


How to set Hot Key

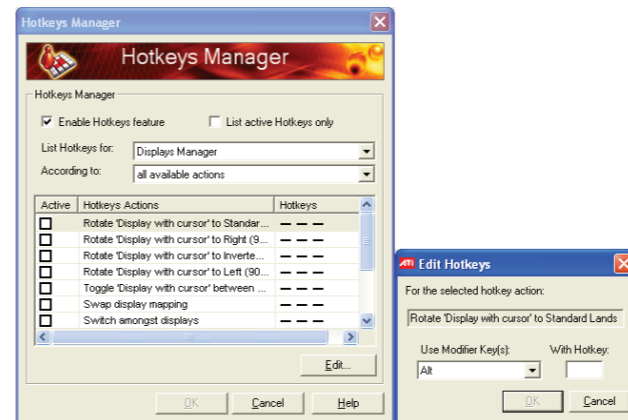
Start > Programs > Catalyst Control Center > CCC – Run [Advanced]



Mark the checkbox of [Use Hot Key Function].
Select [Display Manager] out of [Display Hot Key on the followings]:



Select items for Using and setting Hot Key > Select [Edit] button > Select Hot Key in the window of Hot Key Edit > Select [OK] button.



Select [Hot Key] tab > Select [Hot Key Manager...].



- Enable Clone Mode : Enable the external monitor to display the same picture as the main monitor.
- Enable Extended Mode : Extend the space of main monitor to the external monitor.
- Swap Display Mapping : In Extended Mode, you can switch displays between main monitor and external monitor.
- Toggle through all possible desktop modes : Toggle through all possible resolution between main monitor and external monitor.

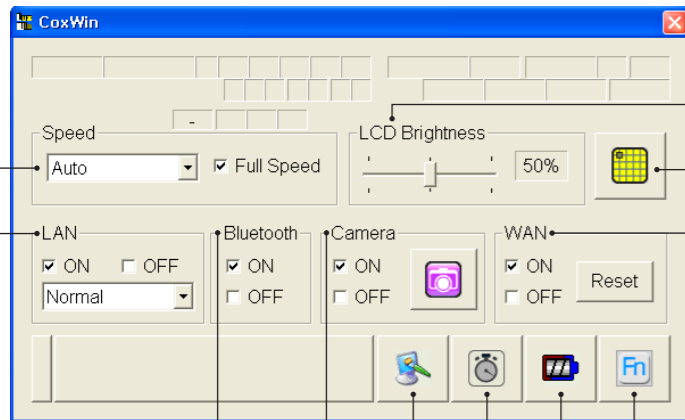
Now it is possible to rotate the display simply with Hot Key set.

3-2 Control Program (CoxWin)

Control Program (CoxWin)

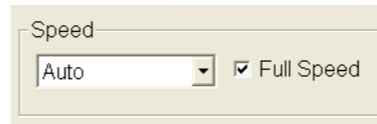


It is a control program to display and control the operation of some devices. Click an icon of CoxWin on the task bar of Windows screen, and a screen pops up.



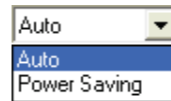
- ① Display CPU speed control and set its control mode
- ② Display LCD brightness status and control its brightness
- ③ Run Touch Screen Calibration
- ④ Set WiFi ON/OFF and mode
- ⑤ Bluetooth ON/OFF
- ⑥ Run Camera ON/OFF and utilities
- ⑦ WAN ON/OFF and Reset
- ⑧ Setting resolution
- ⑨ Running/Finishing CoxTimer
- ⑩ Running/Finishing CoxBat
- ⑪ Explaining the Fn Keys

CPU Speed Control



Select CPU speed control mode.

Auto: It controls the CPU speed depending on power condition (whether connecting adapter power or not). It runs on best performance if "Full Speed" is checked on the state of connecting adapter power.



Power Saving: Set CPU speed low to run in the power-saving mode.

Touch Screen Calibration Setting

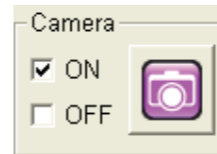


Set it when the touch screen calibration is not correct.

- Press the button to run the calibration setting program. If it is done, the program ends automatically.
- Touch the center of a circle in the order as shown below.
- When you finish setting each spot, move to the next spot. If you want to finish it while setting it, press Esc to cancel the setting.
- When you cancel the setting, it will save its value as set before.

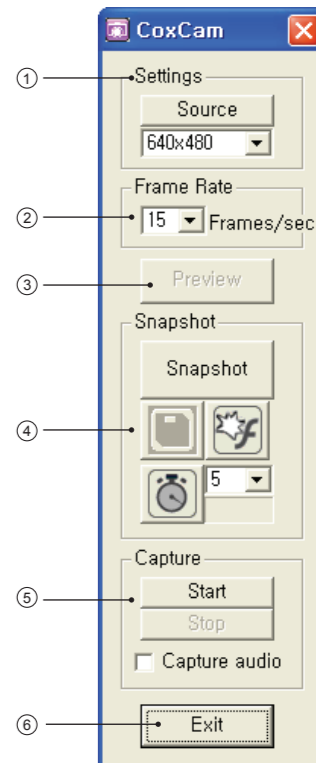


Camera Utility



Check the camera "ON."
Mark "ON" in the checkbox when using the camera.
Press the button to run the camera utilities.

- ① Set camera-input video format and video source
- ② Preview and set the frame rates of movie capture
- ③ Preview Camera-input video
- ④ Snapshot and Save to File
- ⑤ Start and stop capturing a movie
- ⑥ Exit



4. Use of Network

4-1 How to use WiFi

4-2 How to use Bluetooth

This product can configure network by using wireless LAN (WiFi), Bluetooth, WWAN. (HSDPA, WiBro, WiMAX)
To use wired LAN, you need an additional wired LAN card of USB type.

* However, WWAN is available only in the model which support this function.

Wireless LAN (WiFi)

Wireless LAN is a device to connect a wired/wireless router for home or wireless internet service.

With wireless LAN in operation, a green LAN LED flashes at the right bottom of the device.

Sometimes, it is necessary to have a network key for wireless AP's SSID (a router's name) and security to take advantage of wireless LANs. For more information, see the manual of the device.

Types of WiFi

■ AP Connection

- Connect to internet or network by having access to AP in the environment of network where AP is installed.

- AP (Access Point)

As a network device which connects wired LAN with wireless LAN, it corresponds to wireless hub of wired network.

It is possible to connect several wireless LAN-mounted computers. It involves wired/wireless routers for home.

■ Small Networks

- It connects wireless LAN-mounted computers through wireless network. This is available when small networks is configured in a computer and the other computers is wireless connected to this computer.

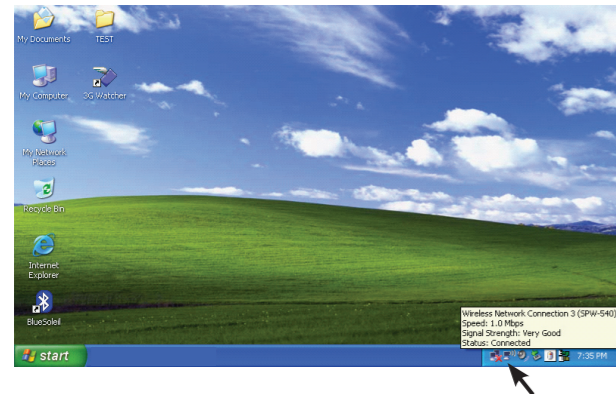
(For more information on how to connect, see Windows Help > Networking and Web)

■ Wireless LAN services from Telecommunication Companies

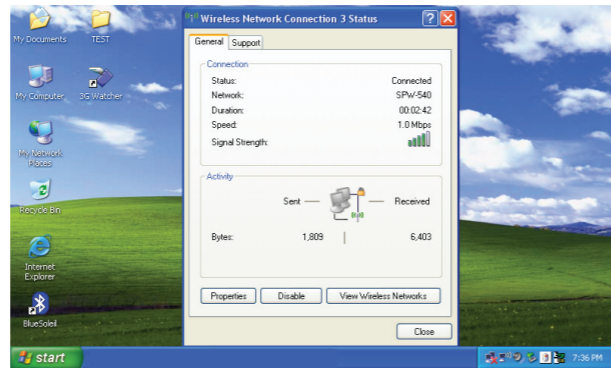
- When you use wireless LANs from telecommunication companies, you can use wireless internet services at hotels, schools, subways and public offices where wireless APs are installed. You have to subscribe a telecommunication company to take advantage of wireless LANs.

4-1 How to use of WiFi

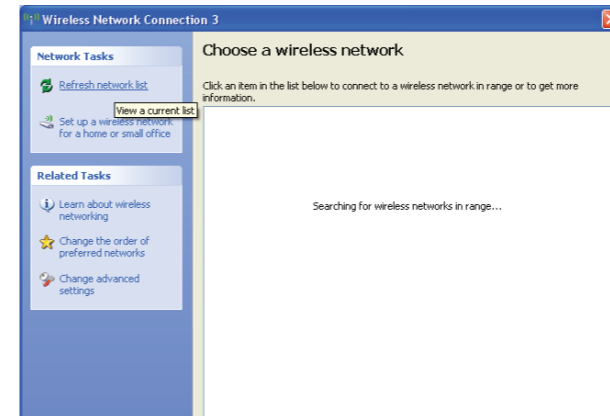
Press the icon of Connect Wireless Network from the task bar to check the status of the present wireless network.



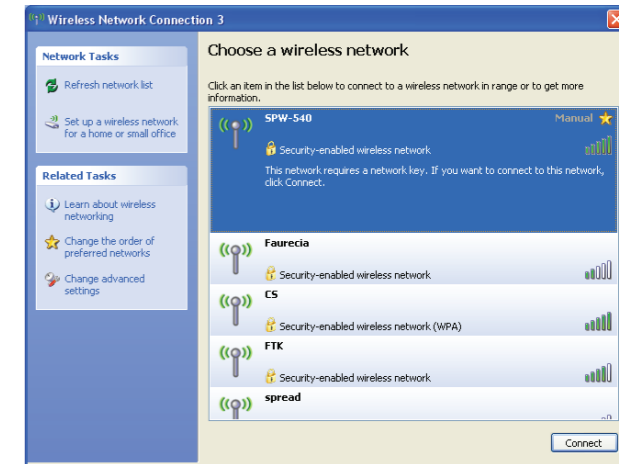
Displaying [Connected] shows that it is in normal operation. If it is not connected, select [See Wireless Network].



Press "Refresh Network List" to search it in the network range.

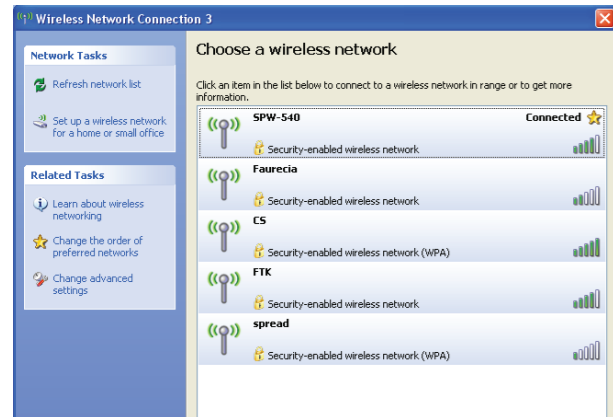


After searching the network, select one to press [Connect] button.



A window for password opens for a network whose security is set. Enter the password into the window.

You can see the wireless LAN (network) in operation as follows:



- When LAN has been set in the Power Saving Mode for a long time, some items from the network list cannot be caught occasionally. At this time, exit the other programs in operation and start [Restore Network].
- When you don't use the wireless LAN for a long time, you can save the battery by setting LAN to [Not Use]. However, in [Not Use] mode, please note that you cannot use Bluetooth as well.
- When internet speed gets slow or its connectivity is not stable, use a control program(CoxWin) to set LAN Power Saving Mode to [Normal]. In the Power Saving Mode, LAN LEDs flash, but in the Normal Mode, LAN LEDs always turn on.

4-2 How to use Bluetooth

Bluetooth is a function to connect the Bluetooth-supporting devices such as cell phones, printers, stereo headsets, mice, and keyboards at a close range in the wireless network. You can be limited to use it, depending on the profiles that each device supports.

How to use Bluetooth

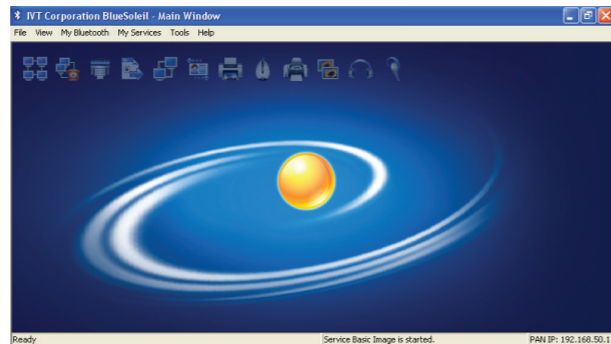
- **Send Files**
It helps to send or receive files between two Bluetooth devices. It also helps to exchange files through other computers, cell phones and PDAs.
- **Network Connection**
It connects to network by having access to wireless LANs of other Bluetooth-mounted computers or through AP or internet routing servers.
- **Network Connection through Telephone**
It connects to network through Bluetooth cell phones.
- **Data Synchronization (Sync)**
It synchronizes Bluetooth-supporting devices such as cell phones, PDAs and laptop computers and Outlook e-mail address data.
- **Electronic Business Card Exchange**
It helps to exchange electronic business card with Bluetooth-supporting devices such as cell phones, PDAs and laptop computers.
- **Sound Output**
The sound of a computer can be played with other Bluetooth devices. (headset etc)
- **Connection of Bluetooth-Supporting Devices**
It connects Bluetooth-supporting devices such as keyboards, mice and joysticks.

How to use Bluetooth

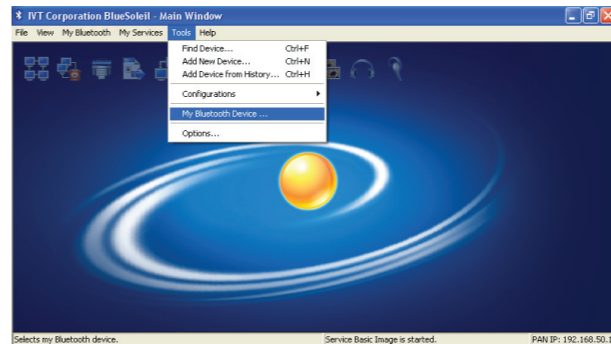
Run [Blue Soleil] program (double click) in which an arrow points in the wallpaper or the program folder.



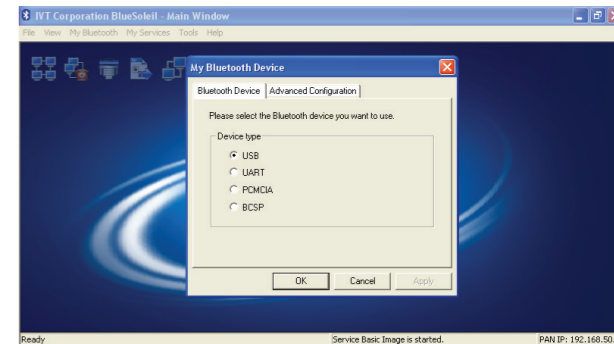
This displays [Blue Soleil], a Bluetooth program, in operation.



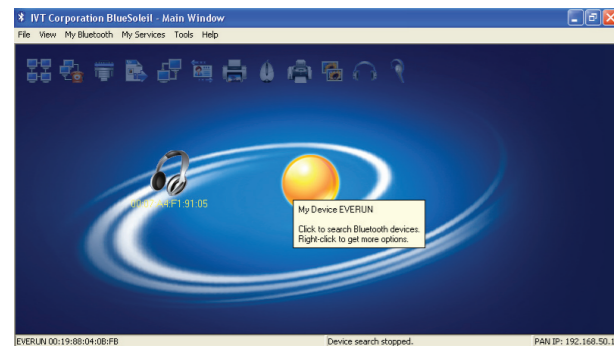
Click [My Bluetooth Device] in the [Tools] menu.



Select Bluetooth Device's device type as [USB].

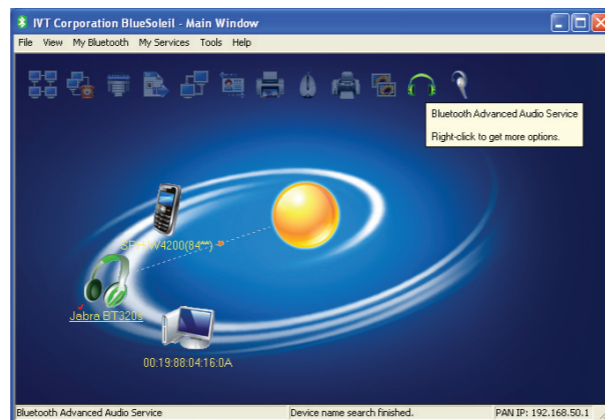


Press the center (yellow ball) of the screen to display Bluetooth devices that are available for connection.



- According to the devices displayed, the upper icons on the screen are activated (light-green).
- Select those activated icons to be connected.
- In case that you have to enter some cords in course of connection, refer to the manual of Bluetooth device concerned to enter them.

You can see Bluetooth properly connected as follows:



5. Use of Basic Functions of Windows XP

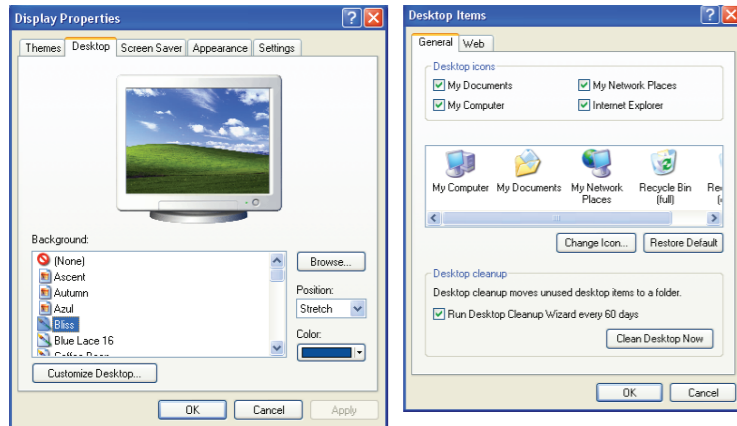
5-1 Setting wallpaper

5-2 Setting mouse

Windows XP Home Edition installed in the product is the same with the system installed in PC.
Refer to Windows Help for details on how to use it and its functions.

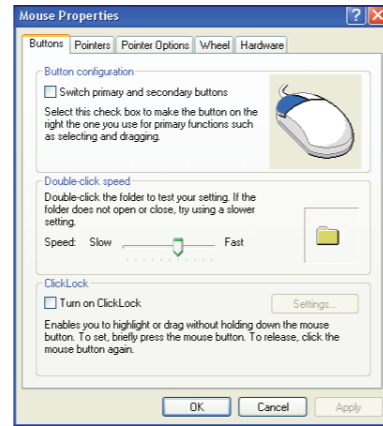
5-1 Setting Wallpaper

- 1 Press the right button of the mouse on the wallpaper with Windows in proper operation.
- 2 Click Properties > Wallpaper > Wallpaper Set by User as shown below.
- 3 Check the required function and click [OK].



5-2 Setting Mouse

- 1 Click Start > Control Panel > Mouse.
- 2 Select the required item to be set.
- 3 Press [OK] to save this setting.



6. Restoration of Windows XP

6-1 Windows XP restoration

6-2 System rescue

6-3 Windows reinstallation and MS certification

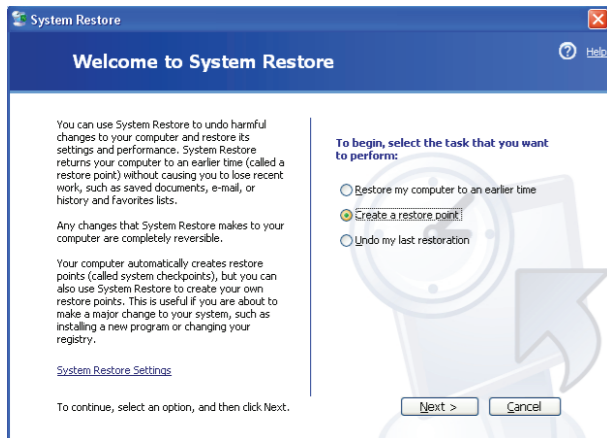
6-1 Windows XP System Restore

This is a function to restore the system to a previous state when it has some problems. If you make a restore point when it works properly, it enables the system to restore to the point when it has some problems. However, please notice that the data and program after the restore point will be deleted. So it is recommended to back up important data in advance after this restore point. (emails, list of favorites, etc. will be preserved)

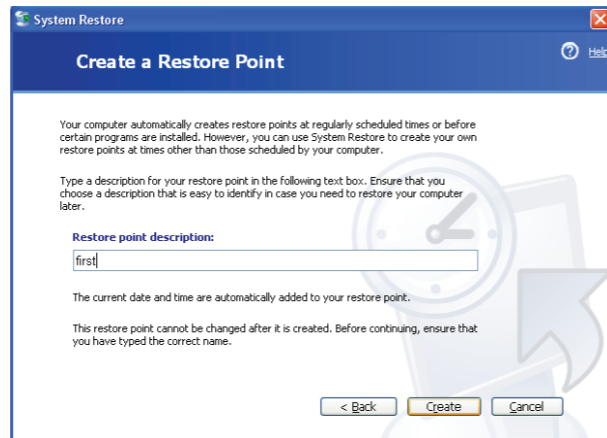
1. How to make a restore point

Click Start > Programs > Accessories > System Tools > System Restore.

Select [Make a restore point] and click [Next].



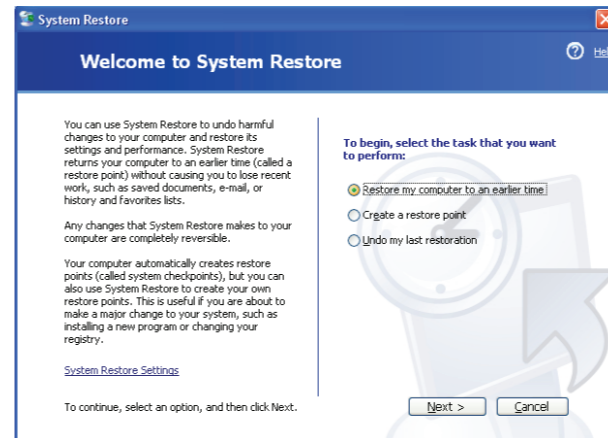
Enter a restore point into [Details on a restore point] and click [Restore]. Then a restore point is created.



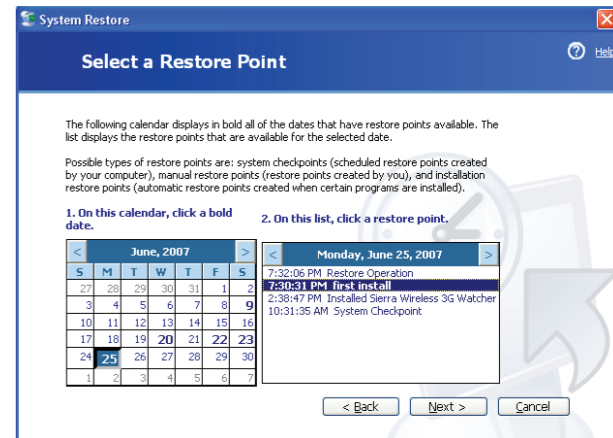
2. Restore to a previous state

Click Start > Programs > Accessories > System Tools > System Restore.
Select [Restore my computer to a previous state] and click [Next].

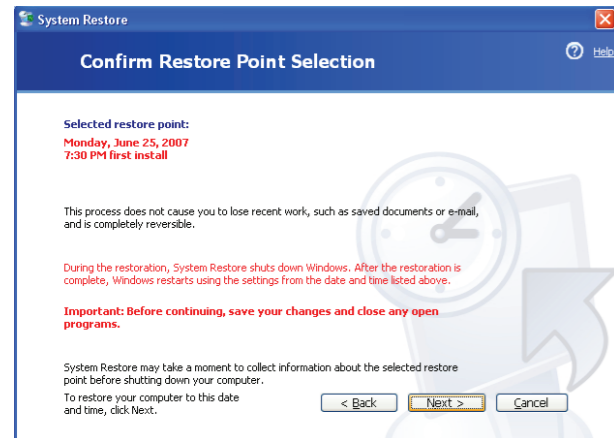
Select [Restore my computer to a previous state] and click [Next].



Select a restore date from the calendar and a restore point from the list on the right side, and click [Next].



Check [a selected restore point] and click [Next].
The computer will reboot to start restoring.



Once it is done, the computer will reboot.
Click [OK] in the window of [Restore Done].
Restore to a selected point is completed.

6-2 System rescue

If you fail booting due to Windows system error or Virus, you can restore the system to factory setting.
(* Only models contained system rescue)

[Notice]

- * Please make sure that you move/copy important files to other locations before system recovery.
- * Window system(c:) is restored to factory setting.
- * Before restoring the system, change system date to 01/01/2007 if you get validation by Internet.

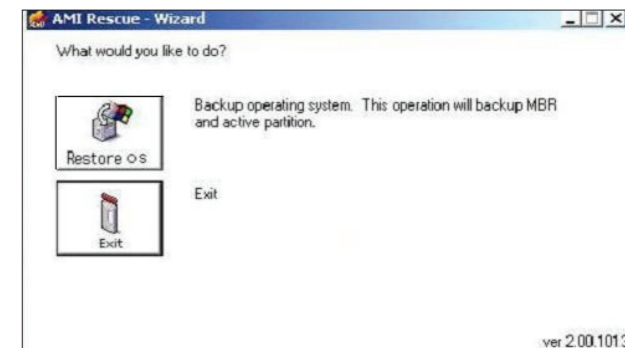
1. Turn the product on and click F10 button several times.
2. AMI Preboot Services will be displayed. (See A)
Move to AMI RESCUE by using arrow key and press ENTER. (Optical mouse does not work at this screen)
3. Windows booting bar and logo will be displayed.
4. Wizard will be displayed as right picture. (See B)
Move to Restore OS by using optical mouse and click.
5. Follow the instruction. (Click YES twice)
6. Window booting bar will be displayed.
7. Press OK when complete recovery and click EXIT.
System will reboot automatically.

- * After finishing system recovery, you need to take Microsoft Windows Validation procedure again.

A.picture



B.picture



6-3 Windows reinstallation and certification

You can reinstall Windows System using Microsoft Windows XP Home Edition CD and external USB CD-ROM provided with the product.

Windows Installation

1. Connect the product to the external CD-ROM and insert Windows CD.
2. Turn the product on again and press F2 to run BIOS Setup.
3. Move [BOOT] item using keys and set "All USB CD ROM" first from [Boot Priority order].
When USB CD-ROM isn't shown in the booting list of this product, set CD-ROM concerned to the first booting.
4. Press F10 to save and reboot it.
5. Rebooting starts with Windows CD.

- ※ If you press [ESC] button while you connect it to the external CD-ROM and boot it for RAM test, a window for setting the booting order pops up. You can use keys to select CD-ROM and boot it.
- ※ Installing Windows can delete the data from the product. So consult with professionals for help.
The manufacturer doesn't support Windows installation.

Windows certification

You should register to Microsoft after Windows installation. Registered products are allowed to get Windows update.

- Getting Validation by Telephone call to Microsoft
 1. Once installing Windows is completed and rebooted, a window for registering the product pops up.
 2. Select your country to display telephone number of Microsoft.
 3. Have a pen and paper ready to take notes before making a call.
 4. Make a call and enter the numbers shown on the screen followed by voiceguide.
 5. Once entering the numbers is done, they will tell you some numbers.
(As it is difficult to enter them at once, you had better take notes)
 6. Enter the numbers into the screen and press the certification number. Then the certification is completed.
- Getting Validation by Internet
 1. Turn the product on and press F2 to run BIOS SETUP
 2. Change System Date of info to 01/01/2007.
 3. Press F10 to save and restart booting.
 4. After booting windows, set dd/mm/yy and time.
 5. Connect to internet.
 6. Start>Program>Windows License Validation.
 7. Select [Validation through Telephone] and click [Next].
 8. Select [Change Product Key] and click [Next].
 9. Input Windows CD key.
 10. After update, press BACK and select [Validation through Internet].
 11. Finish

7. Installation of drivers

1. AMD Processor Driver
2. AMD Dual Core Optimizer
3. Microsoft .NET Framework
4. Chipset driver and utility
5. Audio driver
6. SDA Standard Compliant SD Host Controller driver update
7. WiFi driver
8. BlueSoleil, a Bluetooth utility
9. Update for Windows XP
10. Installation or update of CoxWin

Installation of drivers

If Windows is installed, it is required to install drivers for system devices.

They are stored in the hard disk, but if it is formatted, you have to download the drivers concerned from the websites of the manufacturers.

1. Install AMD Processor Driver
2. Install AMD Dual Core Optimizer
3. Install Microsoft .NET Framework
4. Install Chipset and Video Driver
5. Install Audio Driver
6. Update SD Host Controller
7. Install WiFi driver
8. Install BlueSoleil, a Bluetooth utility
9. Install Windows XP Update (KB918005)
Install Windows XP Update (KB896256)
Install Windows XP Update (KB916199)
10. Install System Control Program (CoxWin)

1. Install AMD Processor Driver

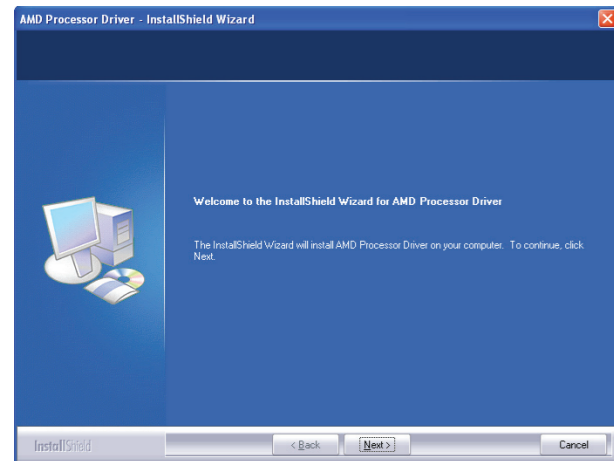
(Note) If the processor is Sempron 2100+, do not install it.

① Processor Driver File (/INSTALL/Processor/AMD_Processor_Driver_1320053/setup.exe)

② Dual Core Optimizer File (/INSTALL/Processor/AMD_Dual-Core_Optimizer_113/Setup.exe)

※ For single core CPU, install the file from ① above, and for dual core CPU, install the files from ① and ②

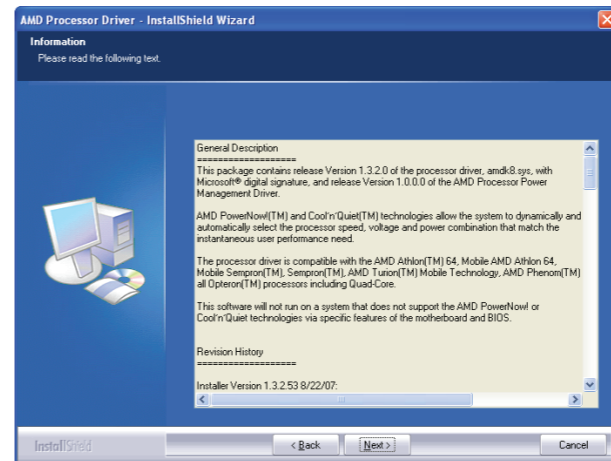
Install those two files as shown below.



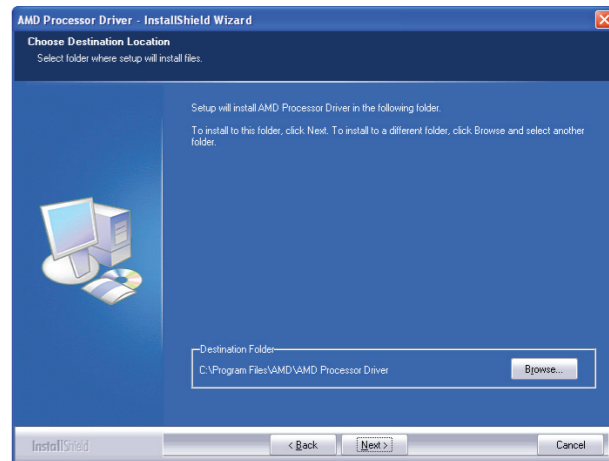
Select [Next]



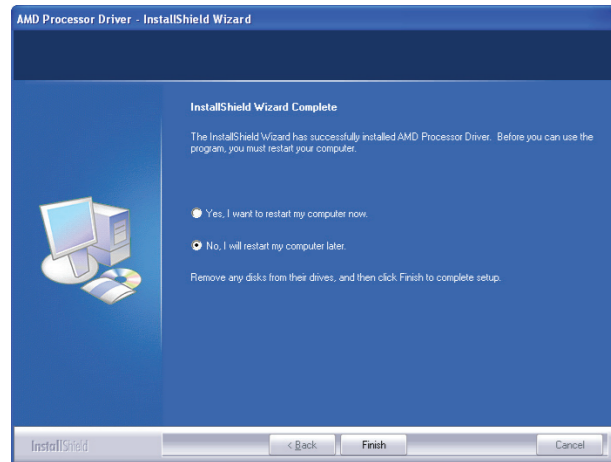
Select [Yes]



Select [Next]



Select [Next]

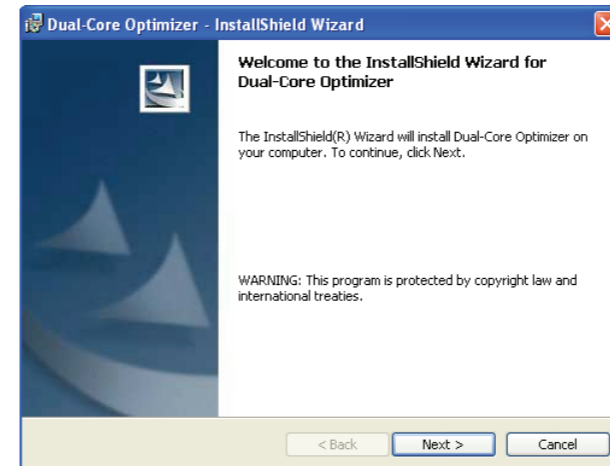


Select [Complete]

2. Install AMD Dual Core Optimizer

※ Please install it only if it is the dual core product.

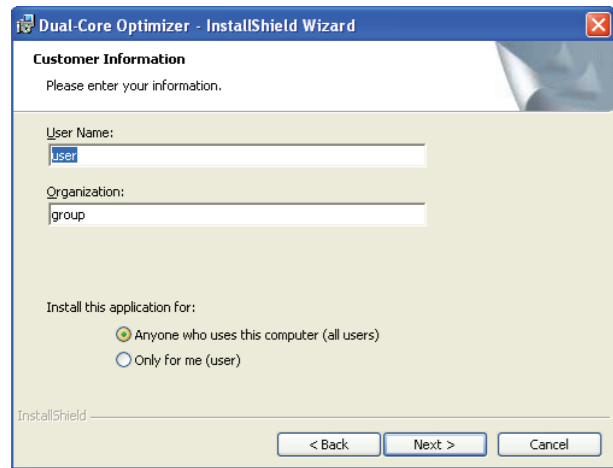
Run /INSTALL/Processor/ AMD_Dual-Core_Optimizer_113/Setup.exe.



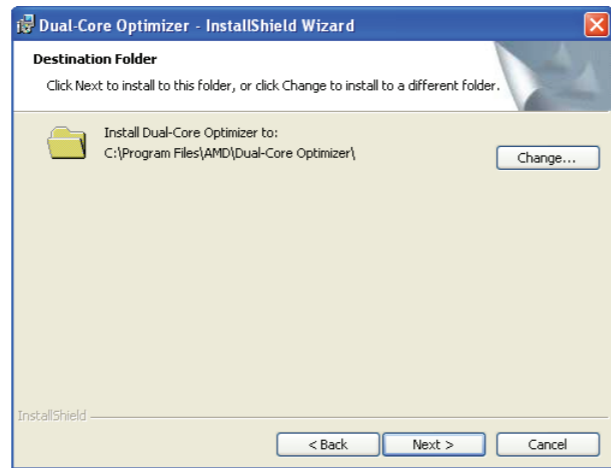
Select [Next]



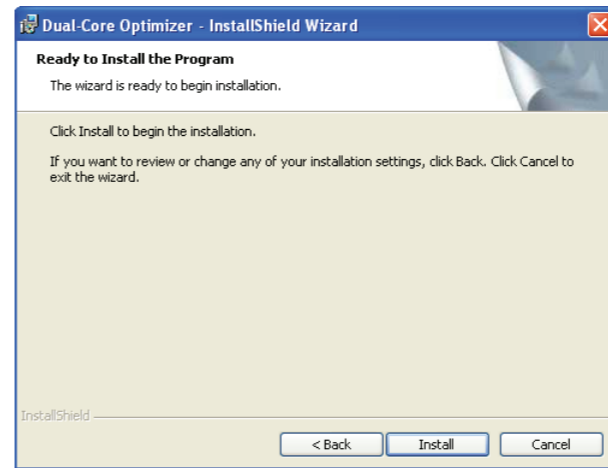
Select [I accept the terms in the license agreement] and then [Next]



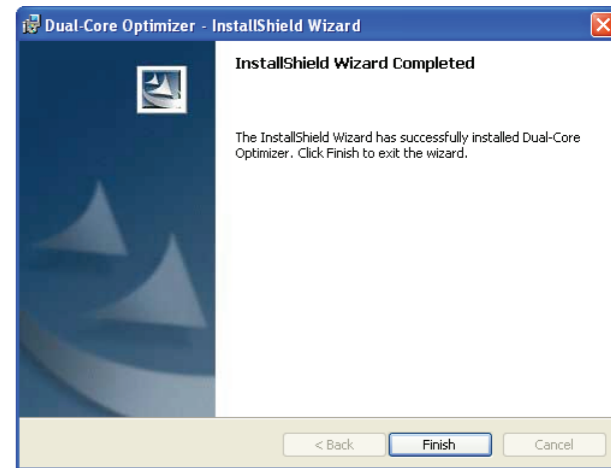
Enter [User Name] and [Organization]
Select [Anyone who uses this computer (all users)] and then [Next]



Select [Next]



Select [Install]

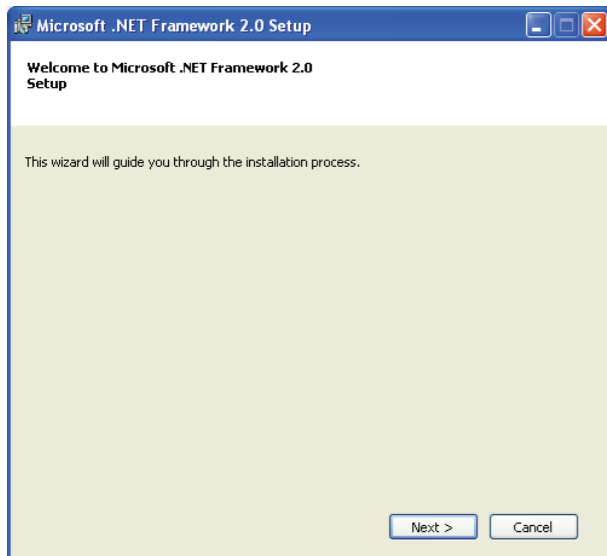


Select [Finish]

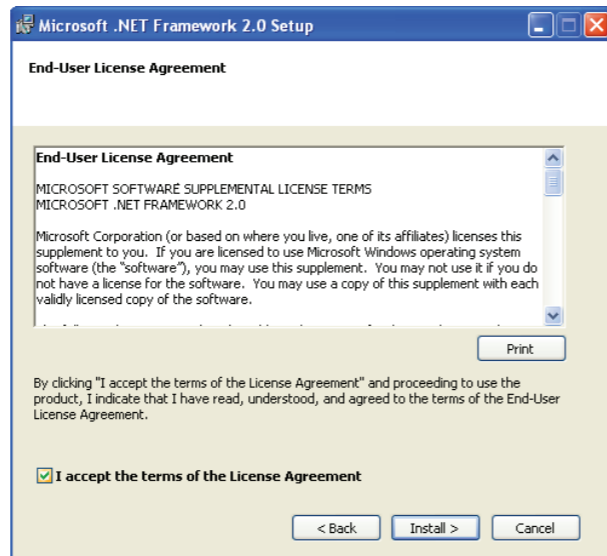
3. Install Microsoft .NET Framework

It is required when you install [Catalyst Control Center] from Chipset Drivers and Utilities (ATI Software).
Make sure to install Microsoft .NET Framework first before [Catalyst Control Center].

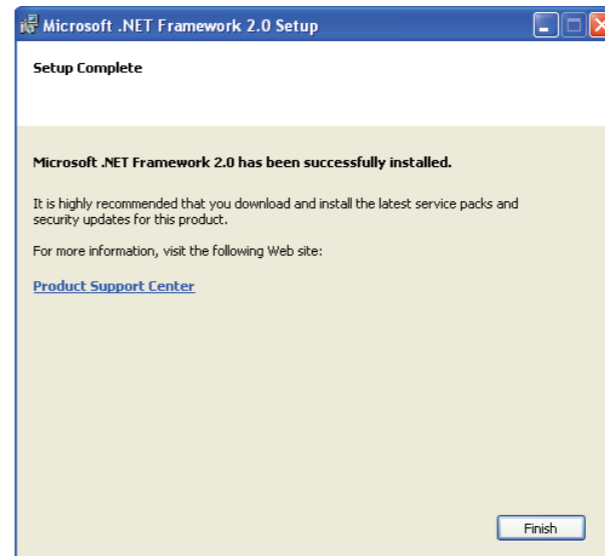
Run /INSTALL/Microsoft .NET Framework/dotnetfx.exe.



Select [Next]



Mark the checkbox of [Agreed] and select [Install]

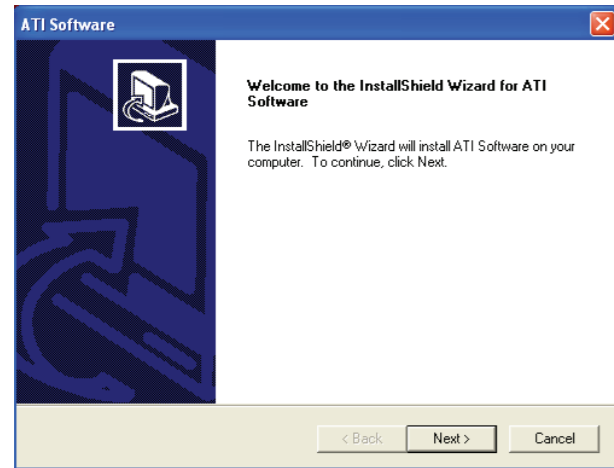


Select [Finish]

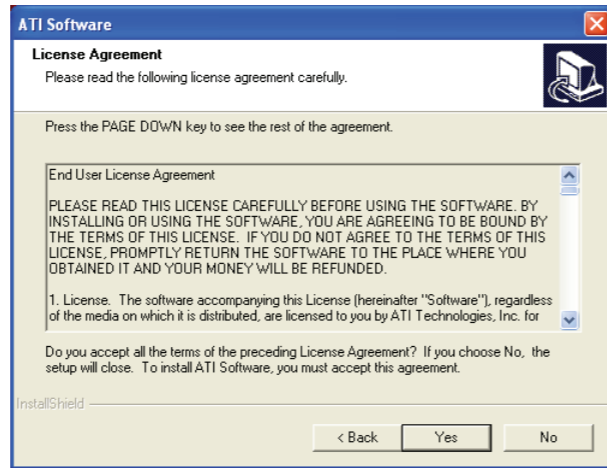
4. Install Chipset and Video Driver

- ※ Before installation, make sure to [Microsoft .NET Framework (version 2.0)] first.
 - ATI Display Driver / South Bridge/IXP Driver / HDMI Audio Driver
 - / Catalyst Control Center / ATI Level limited / Install ATI AVIVO / HDMI Audio Driver Utility

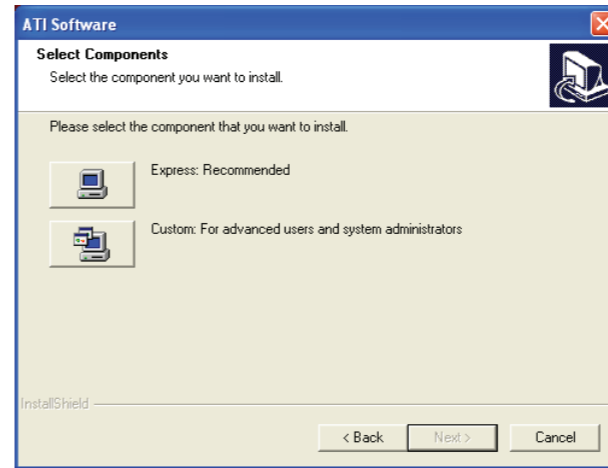
/INSTALL/Chipset/M690E-T_SB600_XP32-6Lang_v8.477_840/XP32-6Lang/Setup.exe



Select [Next]



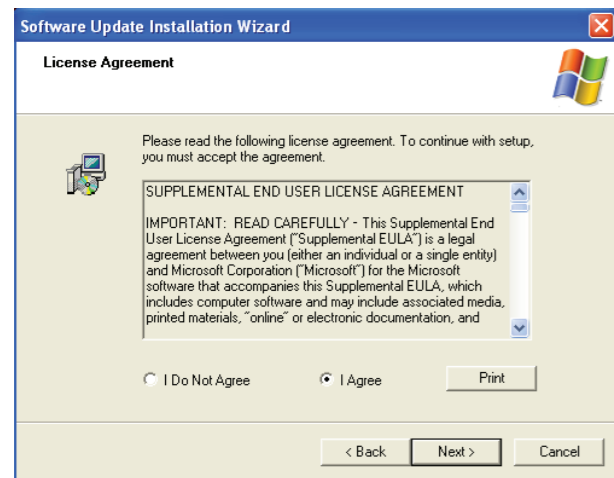
Select [Next]



Select [Express: recommended]



Select [Next]



Select [I Agree] and then [Next]



Select [Cancel]

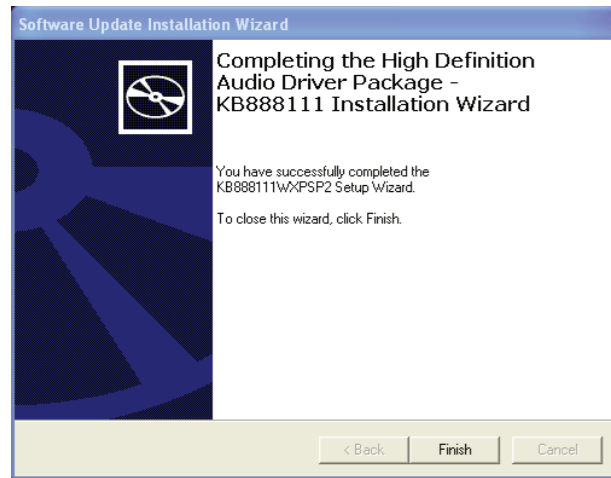


Select [Cancel]

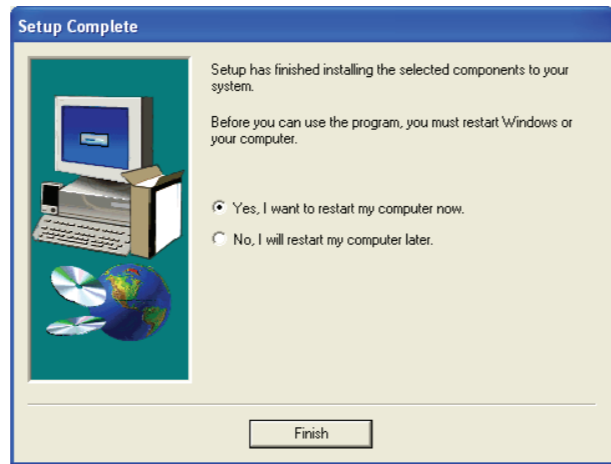


Select [Cancel]

※ While the program is being installed, a new hardware search wizard pops up. Cancel it to continue.



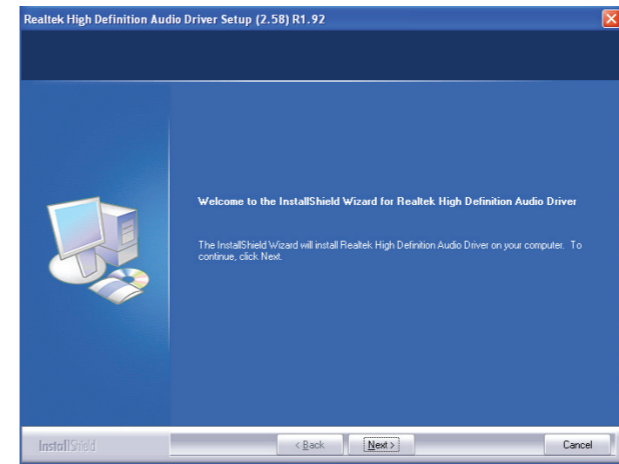
Select [Finish]



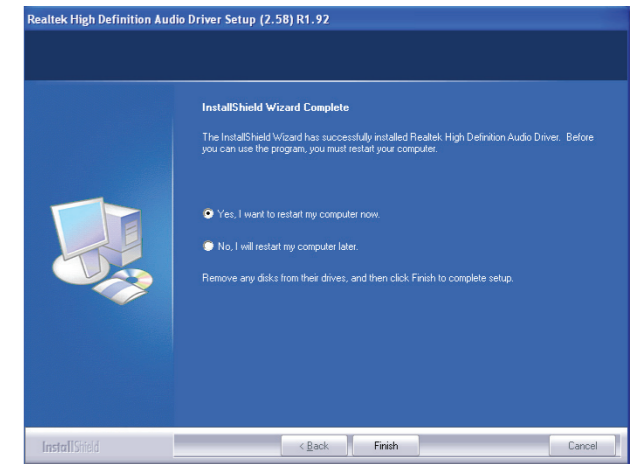
Select [Finish]

5. Install Audio Driver

Run /INSTALL/Audio/WDM_R192/Setup.exe.



Select [Next]

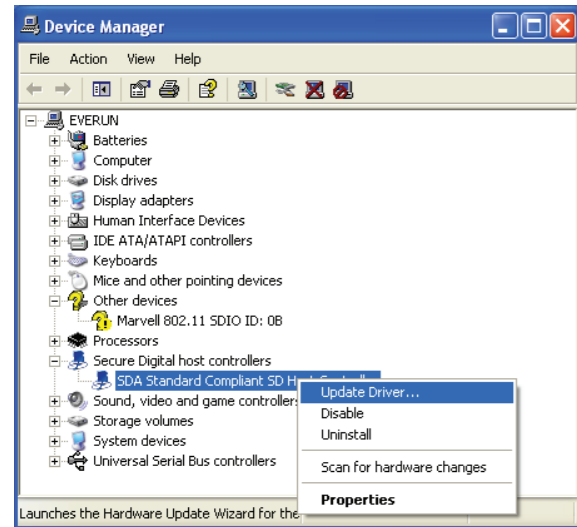


Select [Finish]

6. SDA Standard Compliant SD Host Controller Driver Update

※ It is required to install WiFi driver.

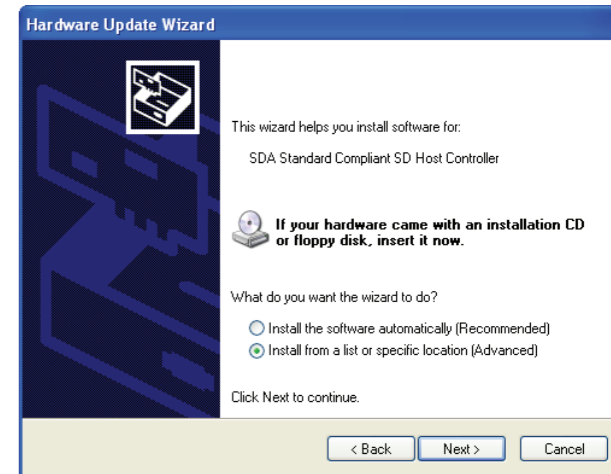
Go to Control Panel > System > Hardware > Device Manager.



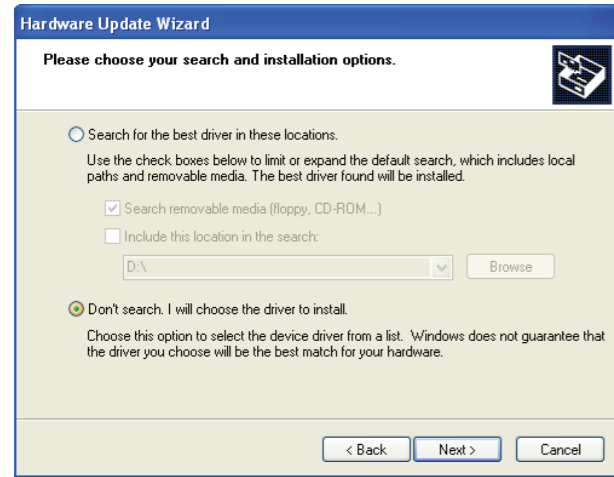
Select [SDA Standard Compliant SD Host Controller] and click the right button of the mouse.
Select [Driver Update] from the pop-up menu.



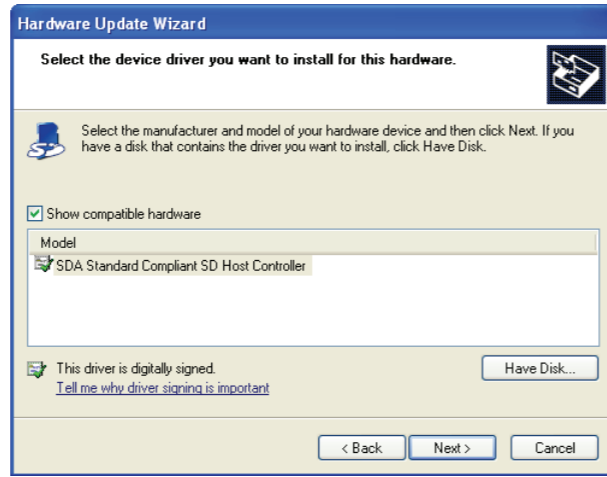
Select [Yes, now and every time I connect a device] and then [Next]



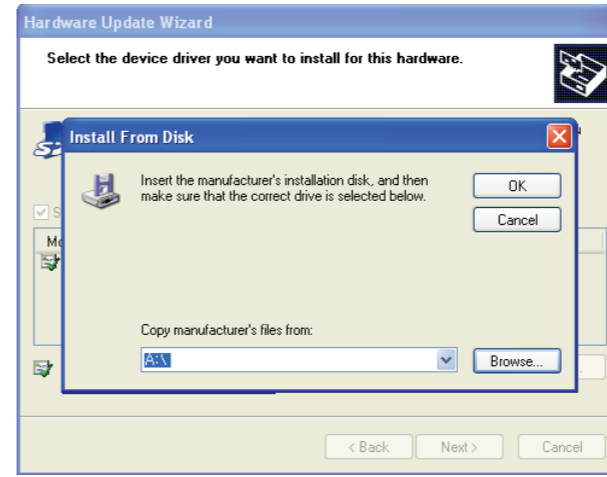
Select [Install from a list or specific location (Advanced)] and then [Next]



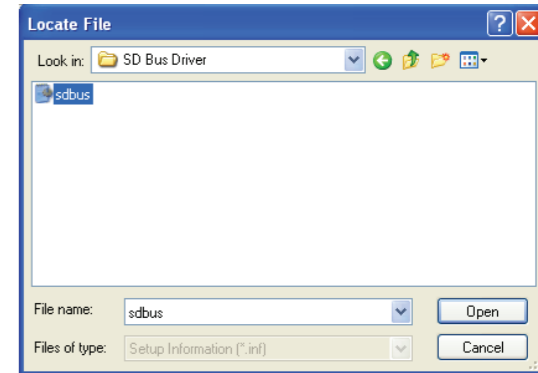
Select [Don't search. I will choose the driver to install] and then [Next]



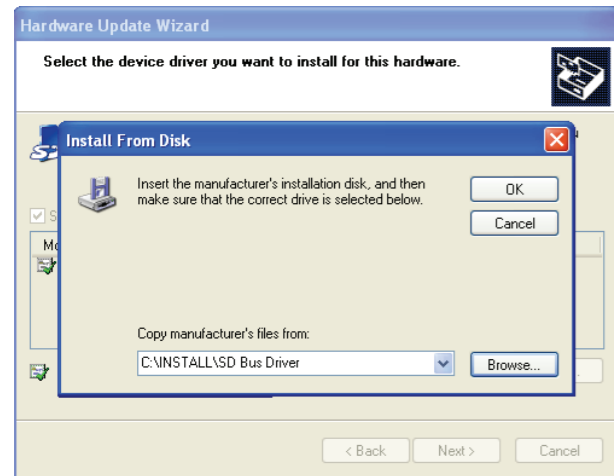
Select [Have Disk]



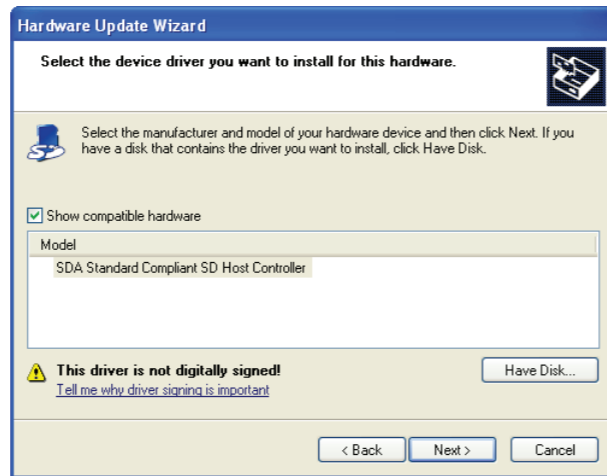
Select [Browse]



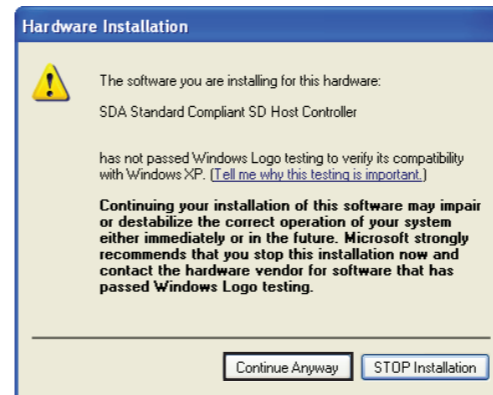
Select /INSTALL/SD Bus Driver/sdbus.inf from [Find a file] and then [Open]



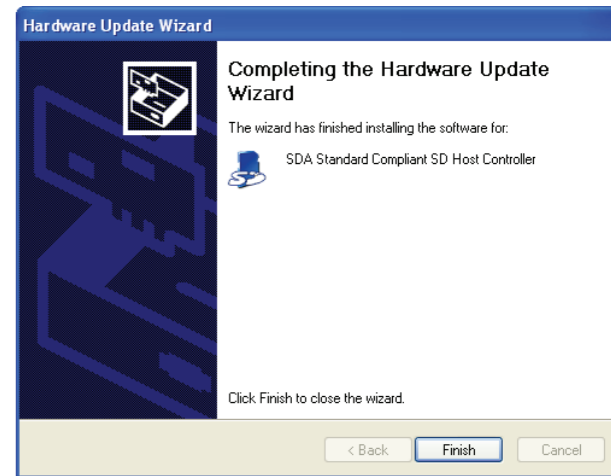
Select [OK]



Select [Next]



Select [Continue Anyway]

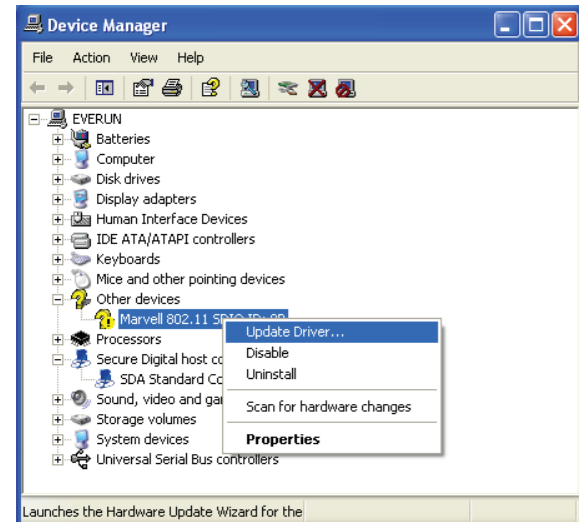


Select [Finish]

7. Install WiFi driver

※ Make it sure to update [SDA Standard Compliant SD Host Controller] first before installing WiFi.

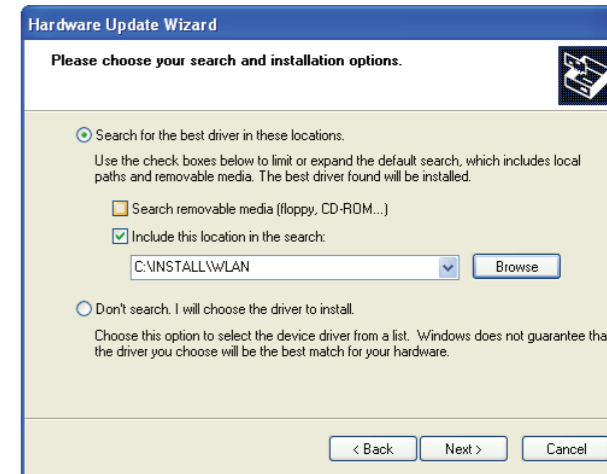
Go to Control Panel > System > Hardware > Device Manager.



Select [Marvell 802.11 SDIO ID:0B] and click the right button of the mouse. Select [Driver Update] from the pop-up menu.



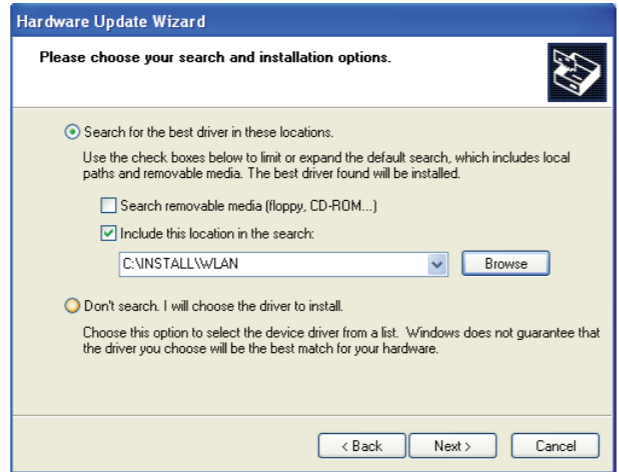
Select [Install from a list or specific location (Advanced)] and then [Next]



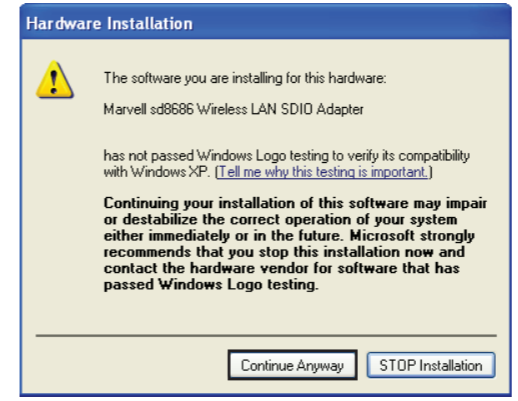
Select [Search for the best driver in these locations]
Mark the checkbox of [Include this location in the search]
and select [Browse]



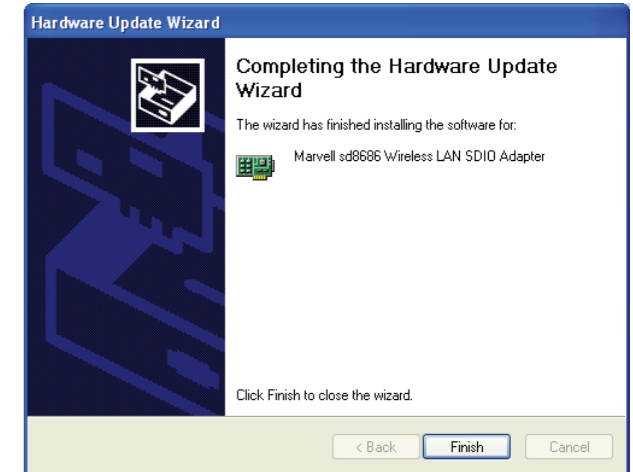
Select the folder /INSTALL/WLAN from [Find Folder] and then [OK]



Select [Next]



Select [Continue Anyway]



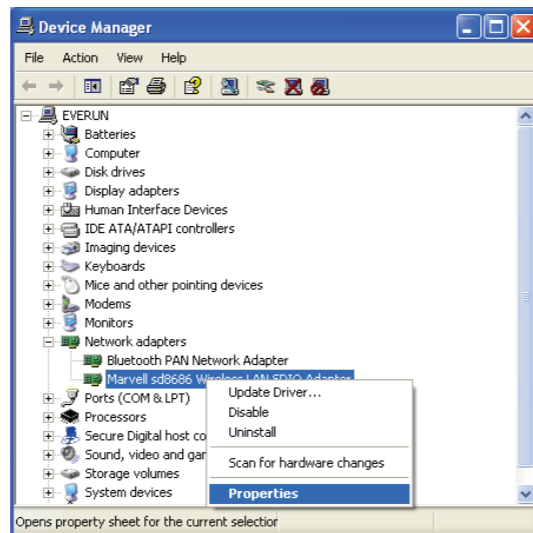
Select [Finish]

When [Marvell sd8686 Wireless LAN SDIO Adapter] Displays as shown above from [Network Adapter] in Device Manager, the wireless LAN driver is properly installed.

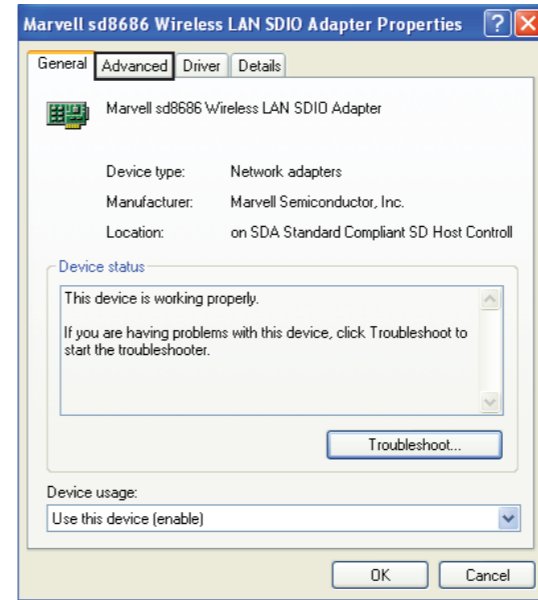


Change a [Power Save Mode] setting of wireless LANs to maintain power management sufficiently.

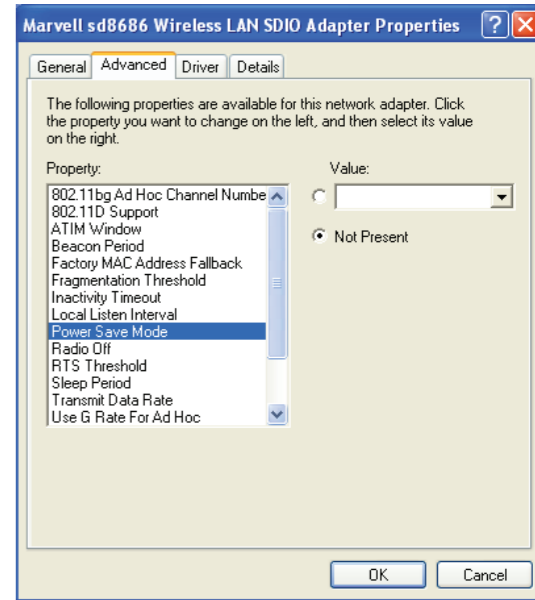
Run Control Panel > System > Hardware > Device Manager



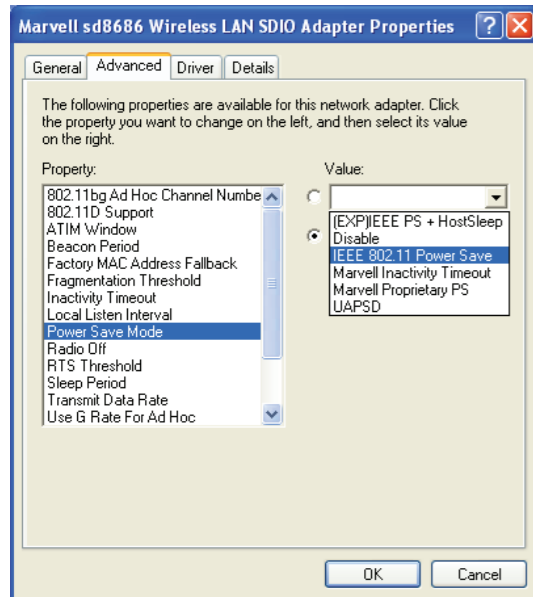
Select [Marvell sd8686 Wireless LAN SDIO Adapter] from [Network adapter] item, and click the right button of the mouse. Select [Properties] from the pop-up menu.



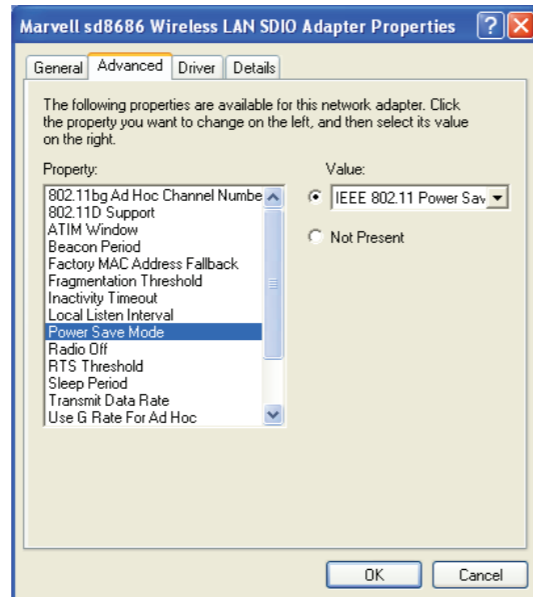
Select an [Advanced] tab



Select a [Power Save Mode] item from [Property]



Select [IEEE 802.11 Power Save] out of [Value] items.

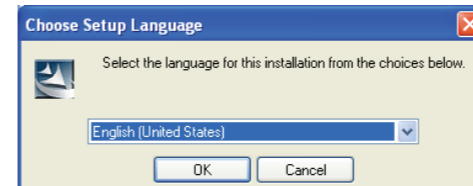


Select [OK]

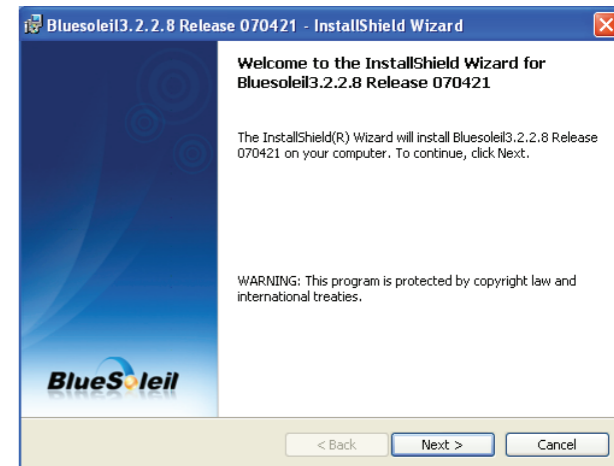
- ※ When internet speed gets slow or its connectivity is not stable, change [Power Save Mode] into [Disable].
- ※ You can change the settings of [Power Save Mode (IEEE 802.11 Power Save)] and [Normal Mode (Disable)] in the control program (CoxWin).

8. Install BlueSoleil, a Bluetooth Utility

Run /INSTALL/Bluesoleil_3.2_VoIP_Multilingual_070406/setup.exe.



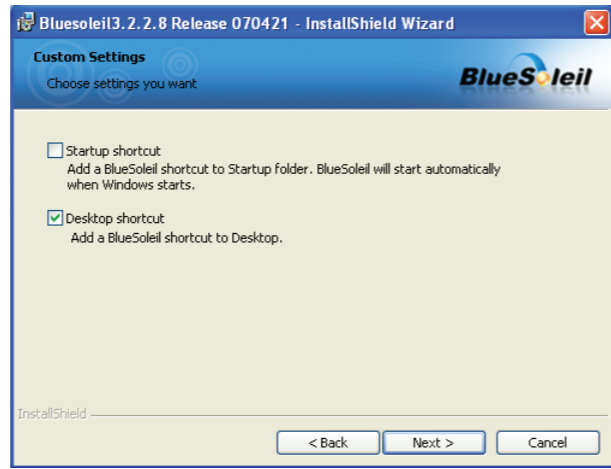
Select a language and then [OK]



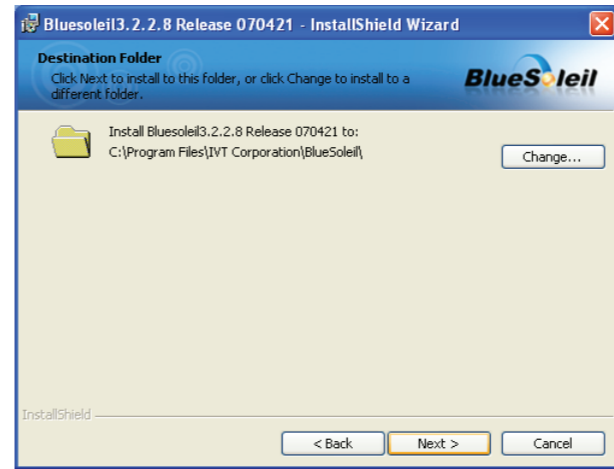
Select [Next]



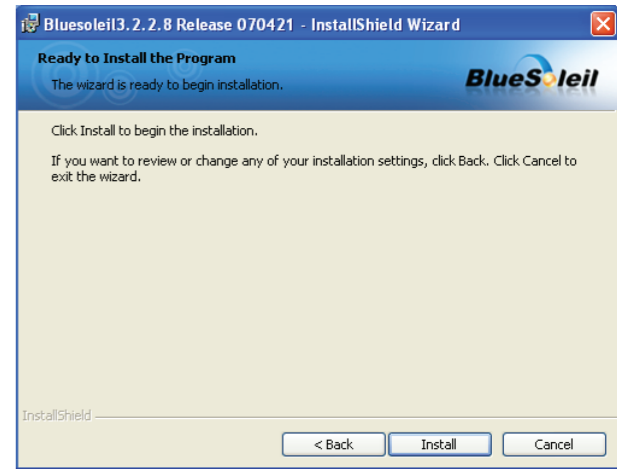
Select [I accept the terms in the license agreement] and then [Next]



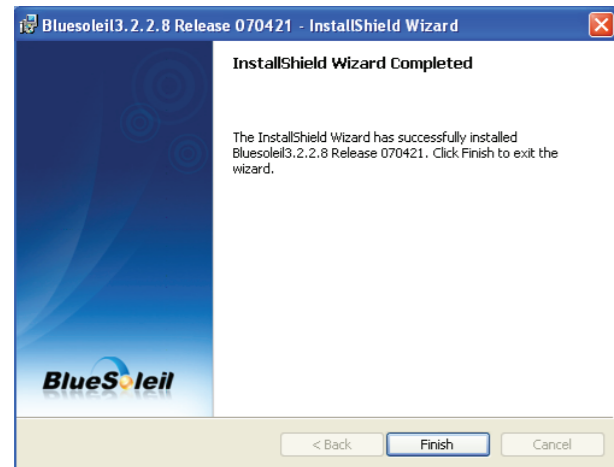
Select [Next]



Select [Next]



Select [install]

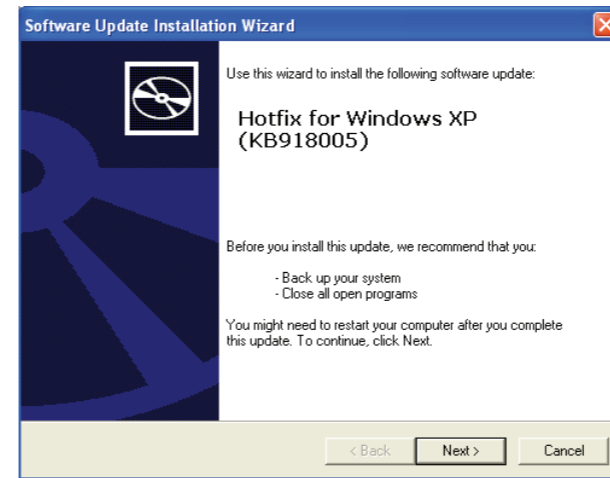


Select [Finish]

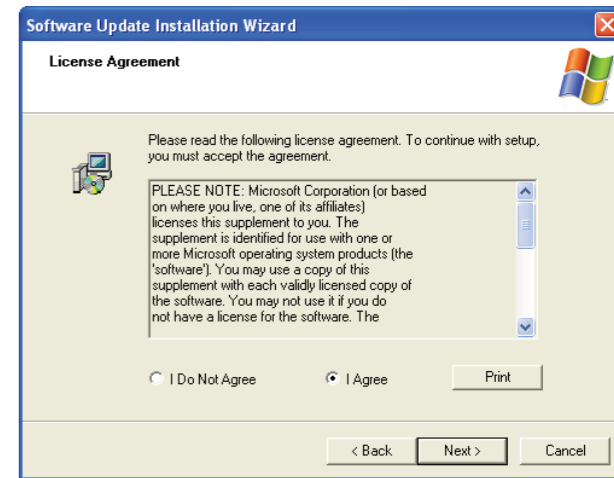
9. Install Windows XP Update

KB918005 (/INSTALL/Hotfix/WindowsXP-KB918005-v4-x86-en.exe)

It solves the problems that battery life reduces in a specific environment when a specific USB 2.0 device is connected in Windows XP-based portable computer. Once its update is done, you should restart your computer.



Select [Next]



Select [I Agree] and then [Next]



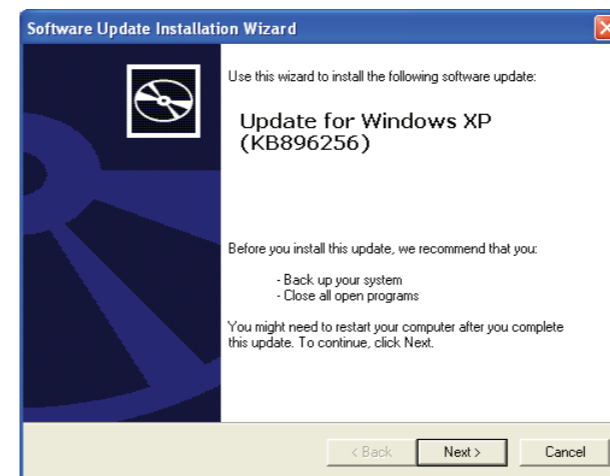
Select [Finish] and restart the system

KB896256 (/INSTALL/Hotfix/WindowsXP-KB896256-v4-x86-en.exe)

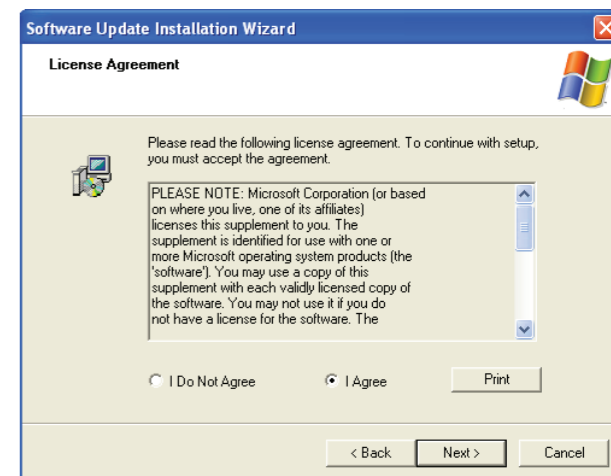
Please install it only in the dual core product.

It supports the function of processor power control and solves the problems that its performance can be lower in Windows-based system where the multi-processor is installed.

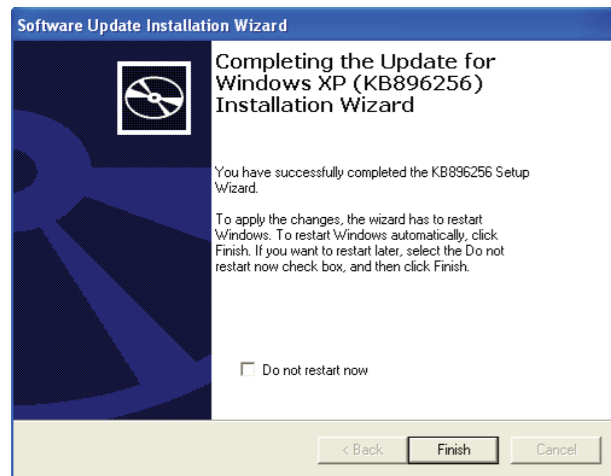
Once its update is done, you should restart your computer.



Select [Next]



Select [I Agree] and then [Next]



Select [Finish] and restart the system

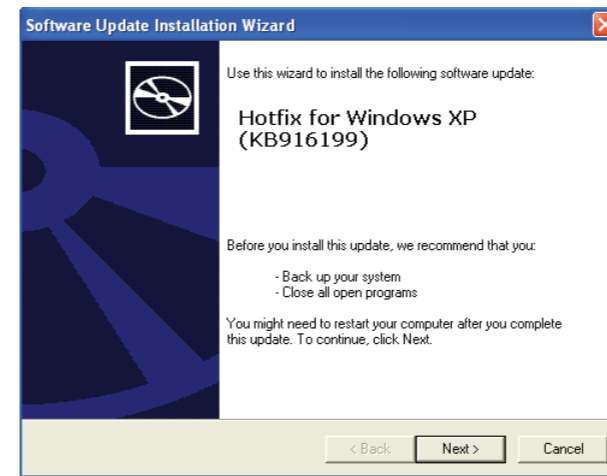
KB916199 (/INSTALL/Hotfix/windowsxp-kb916199-v2-x86-en.exe)

Please install it only in the dual core product.

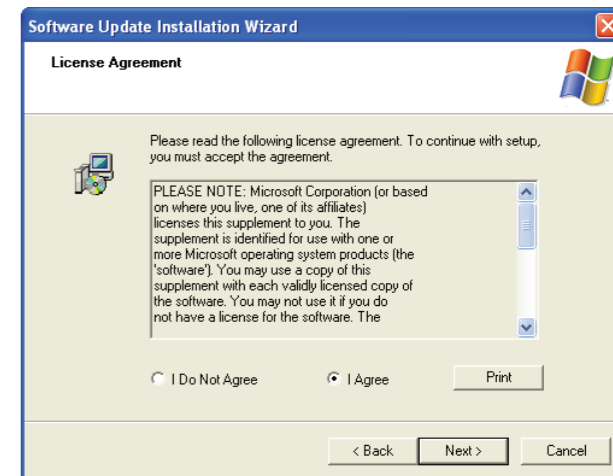
If you press the window or adjust the size of the window when the dual core processor or hyper threading processor is installed, it solves the problems that XP didn't respond to.

Once its update is done, you should restart your computer.

Run /INSTALL/Hotfix/windowsxp-kb916199-v2-x86-en.exe



Select [Next]



Select [I Agree] and then [Next]



Select [Finish] and restart the system

10. Re-install Control Program (CoxWin)

For update, click the right button of CoxWin icon displayed in the tray icons (at the right bottom corner of the screen), and a pop-up menu is shown. Select "Exit" to finish CoxWin that is running.

If you install it without finishing, it will not be installed properly.
(An error message "An error occurred during the move data process:-132" occurs.)
Once it is done, go to Start > Programs > CoxWin > CoxWin or reboot it.



 CoxWin icon

- 8.Q&A
- 9.Specification
- 10.FCC information
- 11.Warranty and Repairs

Q&A

Windows System

Q: Which Windows OS System is compatible in this product?

A: Windows XP Home Edition or Vista.

Q: Are there any programs necessary other than Windows XP?

A: CoxWin, a control program of this product, and device drivers are required.
Others can be downloaded from manufacturer's website.

Q: It has some tears on Windows labels.

A: Registered labels are designed to be shown as torn for its security.

Network

Q: Can I use a wired LAN for it?

A: You need to buy optional portable charger or a wired LAN card of USB type.

Q: How can I use Internet outside?

A: You can use wireless internet services provided by some internet providers using the built-in wireless LAN or public APs from schools or public organizations.Or you can use internet using 3G like HSDPA and WiBro cards. (Contact your local carriers)

* However, you can use HSDPA and WiBro devices only in some specific models.

Q: How can I have access to wireless AP?(For example, wired / wireless router)

A: You should know the name of the router(SSID). In some cases, it requires a security password.

Q: Why is my network often disconnected?

A: Wireless network has big receiving rate due to the neighboring environment. Move to the other place to use it.

Power Unit and Battery

Q: Can I use it with the charging adapter plugged into it?

A: If the battery is plugged into the main body, power is supplied simultaneously to the battery and the device.

In this case, the charging time becomes longer than when you charge the battery with the device off, but it doesn't give any effect to the device. When you charge it in use, heat is very likely to occur. So it is recommended to charge it with the device off.

Q: The battery becomes hot while being charged.

A: It produces heat due to its chemical response when it is charged or discharged. But it is safe as it has a protective circuit that blocks power supply at a certain temperature.

Q: What is the battery life?

A: It can be different depending on its using environment and conditions, but it is about 300 times including charging and discharging.

Q: Can I keep having the adapter plugged into the socket?

A: You may do so to prevent power loss. But we recommend to remove it when you don't use it.

Q: Can I use a different product with the same standard for the adapter?

A: Its polarity can be different even though its output voltage and power supply are the same.

So do not use a different product as possible.

Q: How can I set the warning mark of low voltage?

A: You can set it at Control Panel > Power Options of Windows as well.

Q: How long is it for battery to be fully charged?

A: It will take about four hours.

Q: How long is battery warranty?

A: It is six months after purchasing it.

Q: How can I check battery life?

A: If its time gets shorter or swollen by bits, it almost comes to an end.

In this case, replace it with a new one.

External devices

Q: Can I use all the devices using USB?

A: You can use the keyboard, mouse and memory stick with no problems. But sometimes, such devices as external disk and CD-ROM need additional power supply.

Q: Can I use an external USB CD/DVD-ROM?

A: Yes, you can. Depending on the devices, you need additional power supply. Some devices are incompatible.

Q: Is an external HDD booting supported?

A: It is possible if it is an external USB type. You should format USB storage unit for making it bootable and set it to a startup disk.

GPS Receiver and Navigation

Q: Can I use any GPS receiver?

A: You can use USB or Bluetooth typed receiver. But they can have some differences in their receiving rates.

Q: Which map can I use for the product?

A: If it is a PC version (Windows XP) product, you can use it.

Q: How can I connect to GPS receiver?

A: Go to Control Panel > System > Hardware > Device Manager, and mark the checkbox of 'Port' to set it to the same port and its speed to 9600. For others, see the manual.

Q: It doesn't receive well.

A: If you don't use it for a long time, its receiving is delayed. If it doesn't work even after 30 minutes, move its location. If it still doesn't work, go to Customer Support to have it checked.

Adjusting LCD and Screen

Q: What is its basic resolution?

A: It is 1024 X 600. You can change it in [Display Settings].

Q: How can I control LCD brightness?

A: You can control it by pressing Fn key 6 (darker) or 7 (brighter) from the keyboard.

You can also control it in the control program. (CoxWin)

Q: How can I capture the screen?

A: Press Fn key and P button from the keyboard to capture the screen.

Q: When I touch it with Stylus Pen, the cursor is trembling.

A: It is normal that the pressure of touch screen is not conveyed only to a point, but to all the neighboring pixels.

Q: My mouse's point and the touched point are different.

A: You should make a calibration from the control program. (CoxWin).

Q: My touch screen has some scar in it. Do I have to exchange its LCD?

A: As it is All-in-one system, you should exchange it.

Q: Can I use a protective film for LCD?

A: Depending on the kinds of film, some touch senses are poor, or some film make the screen darker.

You should use the recommended film provided by the manufacturer or the stores.

Bluetooth

Q: Can I connect it to all the devices with Bluetooth mounted?

A: Yes. You can connect it to most of the devices.

Q: How can I connect it to Bluetooth devices?

A: Run Bluetooth devices to operate and connect Bluetooth program, and it will find them automatically.

Q: It often disconnects while connecting to Bluetooth.

A: Bluetooth is a wireless local area network device. Its receiving rate to the neighboring obstacles changes big.

So it is recommended for you to use it near the system as possible as you can. For more problems, go to Customer Support to have it checked.

About options

Q: Hardware (CPU, RAM) is upgradable?

A: No. The main boards are different for each model.

Q: Information of the computer displays different RAM capacity.

A: It shares main RAM with VGA. So it deducts as much as assigned to VGA.

Q: It is getting slower than I used it for the first time.

A: Please check viruses or the programs installed by a user.

Even if it is slow after reinstalling Windows, you should go to Customer Support to have it checked.

Specification

Model	Everun Note D24S	Everun Note S16S	Everun Note D60H
CPU	AMD Turion™ 64x2 Dual Core 1.2GHz	Sempron 3600 1.2GHz	AMD Turion™ 64x2 Dual Core 1.2GHz
Operating System	Microsoft Windows XP Home	Linux	Microsoft Windows XP Home
Storage	SSD 24GB (SLC 8G + MLC 16G)	SSD 16GB (MLC 16G)	30GB/ 60GB/ 80GB HDD UDMA100
Memory	1GB DDR2 400 Main memory + 64M Graphic memory (VGA Shared)		
LCD	7" Wide SVGA 1,024 x 600 TFT LCD with touch screen		
Dual Monitor	Supporting external display up to 1920x1200		
Wireless connectivity	802.11b/g WiFi, Bluetooth 2.0 with EDR		
Camera	1.3M pixels CMOS		
Graphic	ATI RS690E + 128MB DDR2 Side port Memory, Full DirectX 9.0 support, Dual Monitor Support (DB15)		
Audio	Realtek High Definition HD Audio, 0.6W x 2 Stereo built-in speaker, Stereo earphone, Built-in microphone, external microphone		
Input devices	Full QWERTY keyboard (16mm key-pitch), touch screen & 4-mode rotating by ATI support, optical mouse		
External connectivity	USB host(A-type) x 2, USB device (miniB-type), VGA OUT, mini PCI Express slot, SD card slot, USIM card slot		
Battery	3.7V 1cell 5,200mAh Li-Polymer		
Battery life	2~3 hours for web-surfing, 2~2.5 hours for video play, 3 hours of idling		
Power	AC 100~240V 50/60Hz		
Power consumption	Maximum 35W (Charged state)		
Size	200x118x27.5mm		
Weight	713g	710g	742g

The specification of this product is subject to change without notice for improving its performance.

FCC RF Exposure Information

In August 1996 the Federal Communications Commission(FCC) of the United States with its action in Report and order 96-326 adopted an updated safety standard for human exposure the radio frequency electromagnetic energy emitted by FCC regulated transmitters. Those guidelines are consistent with the safety standard previously set by both U.S. and international standards bodies. The design of EVERUN NOTE complies with the FCC guidelines and those international standards.

Use only the supplied or an approved antenna. Unauthorized antennas, modifications, or attachments could impair call quality, damage your EVERUN NOTE, or result in violation of FCC regulations.

EVERUN NOTE was tested for typical body-worn operation using the optional belt-clip / holster placed touch(0cm) from the body. To comply with FCC RF exposure requirements, a separation distance of touch(0cm) must be maintained between the user's body and EVERUN NOTE, including the antenna, whether extended or retracted. The use of non-tested accessories or other body-worn operations may not comply with FCC exposure requirements and should be avoided.

Contact your local dealer for optional accessory items.

For more information about RF exposure, please visit the FCC website at www.fcc.gov

FCC Radio Frequency Emission

This phone meets the FCC Radio Frequency Emission Guidelines. FCC ID number : HVTEVERUN NOTE. More information on the phone's SAR can be found from the following FCC website: [http:// www.fcc.gov/oet/fccid](http://www.fcc.gov/oet/fccid)

USER INFORMATION

Acknowledging Special Precaution and the FCC Industry Canada Notice

Cautions

Modification not expressly by the party responsible for compliance could void the user's authority to operate the equipment.

FCC compliance Information

This device complies with part 15 of FCC Rules.

Operation is subject to the following two conditions:

1. This device may not cause harmful interference, and
2. This device must accept any interference received.

Including interference that may cause undesired operation.

Information to User

This equipment has been tested and found to comply with the limits for a Class B digital device, Pursuant to part 15 of the FCC Rules. These limits are designed to provide reasonable protection against harmful interference in a residential installation.

However, there is no guarantee that interference will not occur in a particular installation.

If this equipment does cause harmful interference to radio or television reception, which can be determined by turning the

equipment off and, on the user is encouraged to try to correct the interference by one or more of the following measure:

Reorient or relocate the receiving antenna.

Increase the separation between the equipment and receiver

Connect the equipment into an outlet on a circuit different from that to which the receiver is connected.

Consult the dealer or an experienced radio/TV technician for help.

Warranty and Repairs

You can get warranty services for this product from the designated Customer Service Centers.

Warranty may not be applied to user's errors. Warranty is limited to the hardware. We do not warrant its Windows OS and 3rd party software.

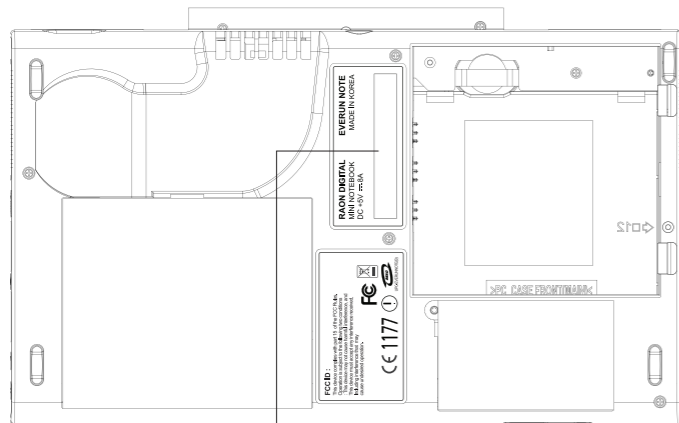
Warranty period

1. Main body : One year after purchase
2. Battery and other peripheral parts from the main body : Six months after purchase

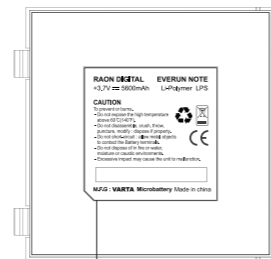
Out of Warranty

1. Found superficial scars on the product
2. Failure by careless use of power (using non-genuine adapter)
3. Using a different OS other than the original OS installed by the company
4. Ignoring the precautions for use of the products
5. Warranty label is damaged
6. Disassembling or altering the product voluntarily
7. Software errors, viruses or malicious cords
8. The product reported as stolen

Serial Number



Serial Number(Main body)



Serial Number(Battery)





RAON Digital Co., Ltd.

18th Floor, KINS Tower, 25-1 Jeongja-Dong, Bundang-Gu, Seongnam-City, Gyeonggi-Do 463-811, Korea

TEL +82-31-782-3800 FAX +82-31-782-3810

E-mail salesinfo@raondigital.com

www.raondigital.com

EVERUN

The compact premium experience